

96 Residents sail to Bermuda

See Below

Special Belleville Graduates Section

See Page 3

see sports page 9

Belleville Times

84th Year No. 35

An Orechio Publication

Serving Belleville Since 1909

Thursday, August 12, 1993

50¢

School clubs, athletic programs, bus aides to feel budget cut axe

"It is a terrible situation," Superintendent of Schools Michael Nardiello said, recounting the elimination of school jobs made necessary by the \$865,000 budget cut ordered by the Belleville Township Council.

One of the few programs left untouched for this year was the all day kindergarten, which will be continued for 1993-4 but will not be offered the following school year.

Budget changes include:

- Reduction in the number of Bus Aides, who supervise behavior of the passengers. There is now one Bus Aide for each of the eight school buses. Only the buses for Special Education pupils will now

have adult supervision.

- Athletic coaches will be reduced from 40 to 28. These included reductions of boys' basketball coaches from four to three; girls' basketball coaches from four to two; cheerleader coaches from two to one; crew coaches from four to three; football coaches from eight to six; gymnastics coaches from two to one; soccer coaches from three to two; girls' softball coaches from three to two; boys' track coaches from three to two, and wrestling coaches from four to three.
- Child Study Team will lose one secretary.

- The number of after-school clubs will be reduced by 12. These include, at the Senior High School, the Math Club, CLAMP for future physicians, Cosmetology Club, DECA ecology club, the Freshman, Sophomore and Junior Class Advisors, the Octagon Club for business students and Students Against Drunk Driving. At the Middle School, clubs affected will be the Builders Club sponsored by Kiwanis, the Computer Club and the Math Club.

- Insurance coverage was reduced by \$22,600 with removal of the "umbrella" policy, which backs up standard policies.

- The Custodial Staff outlay will be reduced by \$26,000, necessitating use of part-time employees.

- A \$30,000 cut has been ordered for contracted transportation used for special education students.

- Glenn Vanbenachoten, who retired as Assistant Band Director, will not be replaced, for a saving of \$3,500.

- Contract negotiations with the five unions representing the administrators, the supervisors, the teachers, the secretaries and the custodial staff have been suspended, and funds set aside for the negotiations have been taken out of the budget.



Superintendent of Schools
Michael Nardiello

Belleville contingent sails on Bermuda trip, 96 strong

In one of the largest mass outings by ocean voyage in Belleville's history 96 residents sailed Sunday aboard the Royal Caribbean cruise liner "Song Of America" for a visit to Bermuda.

Organized by Belleville Travel Service, it is the seventh such outing put together by Travel Service's Vincent Masi and his friend, Thomas Salzano.

Salzano, Belleville's Assessor, and Township Manager Stephen Cuccio, with their families, are

among those taking the trip.

Lisa Capriglione and Louis Frunillo of Belleville had their wedding on Saturday so that they could make the voyage their honeymoon trip. Another honeymoon couple came from South Jersey.

The Belleville contingent will be part of 1,100 passengers on the ship, which which was only put into commission seven months ago.

Leaving Pier 90 at 5 p.m., after a Bon Voyage party at the

Washington Avenue office of Travel Service, the ship was scheduled to dock at Hamilton and St. George in Bermuda, giving the passengers about three days to enjoy the resort islands.

Last year, 38 people made the trip, and 20 of them signed up for this one.

Masi said he has 150 people registered so far for a football game excursion in Miami in December, with the Dolphins as host team.

Township Planner fired, Council nixes funding

By Howard Klausner

Township Planner Robert Ringelheim received notice on Thursday that his job was terminated as of Friday.

Township Manager Stephen Cuccio said Ringelheim would receive his scheduled vacation not pay for August and medical benefits until the end of the year.

The stated reason for the dismissal of Ringelheim was budgetary cutbacks.

Ringelheim's status has been in doubt for more than two months, when he was advised by Cuccio that the job would be made into a part-time position.

Alois Schmitt, a member of the Zoning Board of Adjustment for 20 years and the Planning Board for 18 years, said that Ringelheim had been a "strong help" to both Boards.

"He was the first professional planner we ever had for the Zoning Board," Schmitt said, "and he has

done a great deal to speed up the procedure for obtaining hearings."

Schmitt said that he knew Ringelheim had developed a reputation for relentless prosecution of violators. "Probably, we needed being shaken up," Schmitt said.

Schmitt said the Zoning Board had voted unanimously a month ago to have him meet with Cuccio on reports of Ringelheim's pending ouster.

"He assured us it was entirely budgetary. He said that he planned to replace Mr. Ringelheim with two or three part-time inspectors and a part-time license planner," Schmitt said.

"But running the figures around in my head, I fail to see any savings, or any help to the budget."

Members of the Planning Board, including Board Chairman Sebastian Papa, wrote a letter to the Township Council, urging that Ringelheim's services be retained.

Among the actions taken by

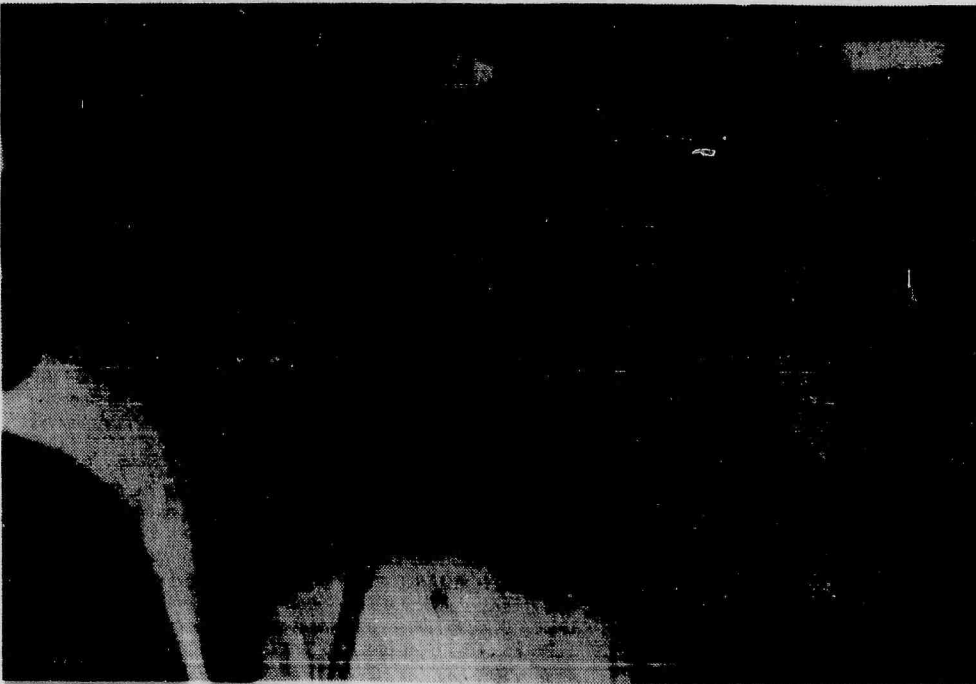
Ringelheim during his tenure was to file violation of zoning charges against Councilman Dr. Frank Noonan, who allegedly had two medical offices in his Holmes Street address, instead of one.

In a hearing on the budget, and a motion by Councilman Bill Cook to fund Ringelheim's office with \$25,000 until the end of the year, Councilman Noonan referred to Ringelheim as "our adversary".

Mayor Marina Perna strongly opposed additional funding for Ringelheim, and the budget change was defeated 4-to-3, with Cook, Thomas Spillane and Jim Messina supporting it.

The defeat ended any chance of Ringelheim retaining his job.

Appointed some six months after the change of government from Commission to Council-Manager was enacted, Ringelheim is one of the few holdovers from the tenure of the previous Manager, Bertrand Kendall.



TRAVELING LIGHT-The tour group, 96 strong, attended a Bon Voyage Party at Belleville Travel Service while their luggage awaited on the sidewalk of Washington Avenue.

Suicide ruled for missing woman

After a two week search, police have located a Belleville woman reported missing since July 18.

Forensic dentists were needed to positively identify the badly decomposed body of a suicide victim found hanging in a tree Aug. 3 in Booth Park, just off Centre Street.

Wanda Uribe was reported missing by her mother after she left her Franklin Avenue home in Belleville on July 18 and never returned.

Police officials said the recent Belleville High School graduate was known to be somewhat depressed and suicidal and published records indicate the 18-year-old was taking anti-depressant medication.

Ruled a suicide by hanging, the Essex County Medical Examiner determined cause of death to be asphyxiation, police said. Nutley police said they view the case as an apparent suicide and not foul play.

A passer-by discovered Uribe's body in a heavily wooded strip along the edge of Booth Park 16 days after she was last seen at a Burger King on Franklin Avenue. She was found hanging from a tree by a nylon rope.

Funeral services were made last week by Orth Funeral Home in New York City.



AAA NATIONAL POSTER PROGRAM WINNERS — Destree Villalobos, a student at School 3 in Belleville, was recently awarded merit citation in the 48th annual National AAA School Traffic Safety Poster Program. Pictured with the student is Paul Kneiback, safety manager for AAA New Jersey Automobile Club. The Club sponsored the contest in Essex, Morris and Union counties. The students were recently honored at an award ceremony at Netherland Brand's Art Gallery in East Rutherford.

St. Joseph's graduates medical technologists

Five northern New Jersey residents have graduated from the School of Medical Technology at St. Joseph's Hospital and Medical Center.

The graduates are Risabelle Belen of Belleville, Renee French of Paterson, Stacey Kennedy of Jersey City, Henry Rodriguez of Wayne and Laura Ruddiman of Bergenfield. They are now eligible to take a national certification examination to become registered medical technologists.

Belen is a graduate of the Far Eastern University, Philippines. French, Kennedy and Ruddiman

will receive their degrees from Kean College of New Jersey upon completion of their medical technology program. Rodriguez is a graduate of Kean College.

The graduates must have completed at least three years of undergraduate studies to enroll in the program — a 12-month program of didactic education and practical instruction in all areas of St. Joseph's laboratory. Students rotate through the areas of hematology, coagulation, body fluids, microbiology, serology, chemistry, and the blood bank.

Spellbound Metaphysical Shop

480 Washington Ave. Belleville NJ
(201) 450-4686



- ★ Saint Candles
- ★ Tarot Cards
- ★ Herbs ★ Oils
- ★ Books ★ Incense
- ★ Jewelry ★ Crystals

WE DISCOUNT TO SENIORS

20% OFF Any Service

NOW THRU LABOR DAY

We know that sometimes things can get a little difficult, and we soon neglect proper dental care. That's why we are offering a 20% discount on any of our services to all senior citizens.

At Smile Today we think proper dental maintenance is important no matter what your age.

James D. Muglia, DDS, BA, FAGD
18 Years of Treating & Beautifying Smiles
Family • Cosmetic • Restorative Dentistry
24 Hour Emergency Service

Smile Today

10 Franklin Avenue • Nutley
Dial "NO-PAINO" (667-2466)



Reviewing plans for the new interfaith chapel are, seated Margaret Cavaleiro, trustee, Clara Maass Continuing Care Center; Reverend Arthur Schute, managing director, Pastoral Care; standing from left, Reverend Wade Renn, trustee, Clara Maass Continuing Care Center; Franklin Fry, chairman of the board, Clara Maass Health System.

Clara Maass renovates Chapel

Clara Maass Health System, Inc. has announced plans to renovate its interfaith chapel. Originally located in the main building of Clara Maass Medical Center, the chapel was expanded and moved to the Clara Maass Continuing Care Center Building in late 1975.

"The interfaith chapel plays a very important role in the lives of many patients, employees and visitors here at Clara Maass Health System," Reverend Arthur Schute, managing director of Pastoral Care at Clara Maass Health System, said. "As the Clara Maass family of health care systems have grown, so have the needs and services for the chapel—hence the expansion." The Clara Maass Interfaith Chapel provides prayer services for many denominations, daily celebrations of mass, memorial services for employees, a studio for closed circuit television in patient rooms, and a quiet space for meditation.

After the renovations, the chapel

will feature columns, a terrazzo-like flooring, improved lighting, and a space conducive to meditation and reflection for persons of all faiths. An enlarged area and new seating will provide flexibility and wheelchair accessibility. The expanded chapel was designed by Willy Malarcher of Englewood, who oversaw the renovation of the cathedral of St. John in Paterson, and has designed chapels throughout the nation.

Fundraising efforts for the chapel will include a gift giving brochure and a book of honor. Gifts of any amount are appreciated and all donors will be listed in the book of honor. Memorial gifts and gifts in honor of individuals are welcome. For more information, contact Arthur Schute at 450-2066.

Was arsonist televised?

Sources indicate that a 10-year-old boy is a prime suspect in a fire that was set in debris in a Belleville tenement hallway.

According to the sources, a television survey camera videotaped the incident.

Police and Fire Department investigators say they are still looking into the situation.

The child would be under the jurisdiction of the Juvenile Bureau.

CASH LOANS

- Confidential Service
- Easy Terms
- FREE Quotes
- VAULT PROTECTED

CASH for: Diamonds, Watches, Jewelry

KITCHENS BY VERSA

VARIETY FOR ALL TASTES AND LOW, LOW PRICES TO WARM YOUR WALLET!

★ ★ FREE ESTIMATES ★ ★

WE GUARANTEE THE LOWEST PRICE!

VERSA SUPPLY COMPANY
30 WILSON AVE., NEWARK, NJ
201-589-3355
FREE BROCHURE SENT ON REQUEST

School Three honors counties

The fourth grades at School Three, under the direction of Trudy Aschauer and Mary Bradley, and supervision of Raffaella Saulino, principal, presented an enjoyable musical review about New Jersey's 21 counties. The show crisscrossed the State from High Point to Cape May and from the Hudson's Rocky Palisades to the Sunny Delaware Bay telling about New Jersey's sights and people of history.

The children spoke about the counties and their importance. More than a dozen songs told about the Morris Canal, New Jersey's railroads, New Jersey's dinosaur — Hadrosaurus, New Jersey's inventors, Revolution's Crossroads, baseball's first game, and the Garden State producing many vegetables and fruits.

Every fourth grader had a part in the show, some were speakers, some children danced the Jersey Bounce and others strolled on the boardwalk in Atlantic City.

The many pictures made by the children explained why it is great to live in New Jersey. From the northern oaks to the southern pines, from towns and cities, and farmlands green they explained why they are proud to live in New Jersey, New Jersey and you, perfect together.

The children enjoyed presenting the program as much as the audience did watching it. Many positive comments were made on what was learned about our state and the lasting educational experience for the fourth graders at School Three.

Call to Clara Maass Health System

Construction Detours Around Clara Maass Campus

• From Newark Avenue—

Proceed on Newark Avenue to Rocco Street, turn onto Rocco Street (into Clara Maass property). At end of Rocco Street make a right, circle in front of Clara Maass Main Entrance onto the visitors Parking Deck.

• From Franklin Avenue—

Off of Franklin Avenue turn on Mill Street west bound (away from Branch Brook Park). Make a left off Mill Street onto Harrison Avenue. Next make the third left onto Sanford Avenue. Circle in front of Clara Maass Main Entrance onto the Visitors Parking Deck.

Questions or Concerns about the Detour?
Call Clara Maass Health System at 450-2116.



CLARA MAASS HEALTH SYSTEM, INC.
A Cornerstone of the Community For 125 Years

• A Distinguished Community Benefit Standards Hospital •

Learn to Prepare Income Taxes!

H&R BLOCK

INCOME TAX TRAINING SCHOOL BEGINS SOON

■ THOUSANDS of people learn how to prepare income tax returns from H&R Block and then earn money as income tax preparers. H&R Block, the world's largest income tax preparation service, offers its Income Tax Course starting September 13th. Morning, evening, and weekend classes are available.

■ EXPERIENCED INSTRUCTORS teach tax law, theory, and application. Classroom discussion and practice problems provide students with a thorough understanding of each tax topic included in the course. Students learn how to handle increasingly complex tax situations as the course progresses.

■ IDEAL FOR people who want to increase their tax knowledge, the course teaches students how to save money on their taxes and also prepares them for a rewarding career.

■ THE AFFORDABLE fee includes textbooks and supplies. Graduates receive certificates of achievement and continuing education units (CEUs). Qualified graduates of the course may be offered job interviews with H&R Block but are under no obligation to accept employment.

■ THOSE INTERESTED in more information about the H&R Block Income Tax Course may call
1-800 TAX-2000

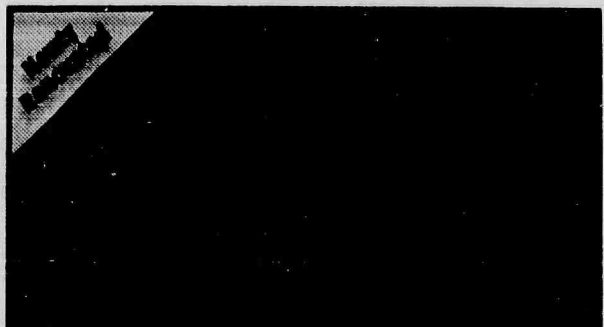
Grand Opening

Glenwood Diner

265 Glenwood Ave. • Bloomfield • 748-1877

New Hours:
Mon.-Sat. 6am-10pm
Sunday 7am-9pm

Your Hosts:
Bill Liaros & Bob Zaphiros



10% Off To All Senior Citizens After 3PM

BREAKFAST SPECIAL
2 Eggs, Toast & Coffee
\$1.32

Soup, Salad, Potato, Vegetable & Dessert with all Dinner Specials

* FREE *
Soft Drink or Coffee with any Purchase

* FREE CUP OF SOUP WITH ANY SANDWICH *

Pet Corner



Pals For Life

Dog Training By Greg Serian

- Puppy Training • Behavioral Problems
- Basic Obedience • Puppy Referral

(201) 338-0815



A CUT ABOVE FOR PETS ONLY

85 Franklin Avenue, Nutley
Pet Grooming For All Breeds
Highest Quality Pet Grooming In The Area
Pick-up & Delivery
Tues. Thurs. Sat.
By Appointment Only
667-PET 1 (7381)



NJIT has 11 on Dean's List

Eleven Belleville residents earned Dean's List honors for the Spring semester at New Jersey Institute of Technology.

Named to the list were Seniors Gayathra S. Fernando, George S. Lukowiak, Matthew Edward Torti III, Benedetto Arment, Joseph M. Mauriello and Roger P. Real.

Junior Manish R. Bhatt was also named to the Dean's List.

Sophomores named to the list were Randolph J. Feliz and Jihyun Lee.

Fifth year Architecture majors who were named to the Dean's List are Jerry D'Alessio II, and Katherine Y. Eng who is in the Honors Program.

To qualify for the Dean's List, students must achieve a grade point average of 3.0 with no grade lower than a C.

Belleville Graduates

Camille Dullaghan is Honors graduate

Camille Simini Dullaghan received a Master's degree in Psychiatric Nursing, with emphasis in child and adolescent psychiatry, from Columbia University, New York, at commencement exercises in May.

As an honors graduate, she received an award for Academic Excellence and has been invested as a member of the Sigma Theta Tau International Nursing Honor Society.

Berkeley cites two students

Anna Maria Loiacono has been named to the President's List for the ending Spring quarter at The Garret Mountain Campus of Berkeley College of Business, West Paterson. To qualify for the President's List, students must maintain a 4.0 average.

Pio Alberto has been named to the Dean's List.

Dean's List students must maintain a 3.5 average.

Society.

A graduate of Belleville High School, Ms. Dullaghan attended St. Joseph's Hospital School of Nursing, Paterson, and earned her Bachelor of Science degree from Upsala College.

From 1982 to 1987 she served at the Belleville Health Department as a public health nurse. Currently, Ms. Dullaghan is on the faculty of the Mountaineer Hospital School of Nursing, on the staff of the Verona Counseling Center, and is the emergency psychiatric services clinician at Rahway Hospital.

Seven receive NJIT degrees

Seven Belleville residents were among 717 students who received degrees from the New Jersey Institute of Technology during its annual Winter Commencement Exercises held in January.

Nickolas Siscoglou received a Master of Science degree in Engineering Management.

Jomon Luke and Ashish K. Mittal each received Master of Science degrees in Computer Science.

Mohammad A. Pouladin, Louis B. La and Thomas J. Spirook each received Bachelor of Science degrees in Electrical Engineering.

Qian Wang received a Master of Science degree in Electrical Engineering.

Resident graduates Rutgers

Jay Marchese received a Bachelor of Science Degree when he graduated from Rutgers University, New Brunswick on May 23.

Jay played baseball for the Scar-

let Knights all four years he attended Rutgers.

Jay is the son of Joyce and Justin Marchese of Belleville. He will go on to study law.

the ASSEMBLY POINT

We miss you, Bill!

"A Friendly Neighborhood Tavern"

Sundays: Ladies Nite-1/2 price bar drinks
Tuesdays: 75 cent drafts 8-12pm
Wednesdays: 10 wings/\$2.50 frozen drinks
Thursdays: \$5 pitchers
Fri: LEDGE • Sat: ELIMINATOR
Never a Cover • Great Food
*** ATTENTION LADIES ***
MALE REVUE - Aug. 24th
\$10 ticket incl. 1 hour OPEN BAR
450-4801 Open 7 days 258 Mill St. Belleville

Video Repair Express

Having Problems With Your V.C.R.?

FREE Pick-Up
FREE Return
FREE Repair Estimate

• 90 Day Guarantee on Repairs
• Most Repairs Done In 48 hours
• VCR Cleaning \$14.95 Reg. \$29.99

\$10.00 OFF
On Any VCR Repair
Limit one coupon per customer must be presented at time of repair not valid with other coupons.

Call Video Repair Express (Video Tonite)
11 Ridge Road, North Arlington **997-4141**

Ashley's
a sociable gathering place
1065 Bloomfield Ave. • Clifton • 778-2253
(Styartowne Shopping Center)

Saturday Lunch Special
50% OFF
Buy one sandwich or burger, get a second sandwich or burger* at 1/2 price!
* of equal or lesser value
Cannot be combined with other offers. Valid only with coupon.

Saturday Lunch Special
\$1.50 OFF
Any check totaling \$7.00 or more!
Cannot be combined with other offers. Valid only with coupon.

Ashley's
a sociable gathering place
1065 Bloomfield Ave. • Clifton • 778-2253
(Styartowne Shopping Center)

50% OFF
Buy one dinner entree, get a second dinner entree* at 1/2 price!
* of equal or lesser value
Cannot be combined with other offers. Valid only with coupon.

50% OFF
Buy one dinner entree, get a second dinner entree* at 1/2 price!
* of equal or lesser value
Cannot be combined with other offers. Valid only with coupon.

No Point Home Mortgages.

15 Yr. Fixed Rate
6.88% RATE **6.92%** APR

20 Yr. Fixed Rate
7.50% RATE **7.54%** APR

No-Point Adjustable Rate Mortgages and No-Point Affordable Home and First Time Home Buyers Mortgages are also available. Rate is for single family, owner occupied dwellings in Northern New Jersey with loan amounts up to \$203,150. Other programs available for larger amounts. Interest rate subject to change.
1-800-522-4100

Valley National Bank

Member Federal Reserve System

THE BANK THAT WORKS

As an example, on a \$100,000 loan amount at these APRs with no points, the monthly payments are \$891.86 for the 15 year term and \$805.60 for the 20 year term with a 25% down payment on a single family, owner occupied dwelling in Northern New Jersey. Valley National Bank cannot be held responsible for typographical errors; prevailing rates will apply. ©1993 Valley National Bank

THE ORIGINAL LIQUOR DISCOUNTER

BUY RITE

PRICES EFFECTIVE WED. AUG. 11TH THRU TUES. AUG. 17TH

JOHNNIE WALKER RED LABEL 1.75 LITER 26.99	PHILADELPHIA BLANDED WHISKY 1.75 LITER 10.99	BLACK VELVET CANADIAN WHISKY 1.75 LITER 11.99	JOHN BEGG SCOTCH WHISKY 1.75 LITER 15.99	TANGUERAY STERLING 80 PROOF VODKA 1.75 LITER 19.99	BASILICA BAMBULA 750 ML 9.99
SCORESBY SCOTCH WHISKY 1.75 LITER 15.99	MOUNT GAY ECLIPSE RUM 1.75 LITER 18.99	FRANZIA WHITE ZINFANDEL 5 LITER BOX 11.99	JACK DANIEL'S COUNTRY COCKTAILS 4 PACK 200 ML 4.99	CINZANO SWEET 1 LITER 4.99	DEKUYPER PEACHES SCHNAPPS 750 ML 6.99
HARVEYS (SP) BRISTOL CREAM 750 ML 8.99	JIM BEAM BOURBON 1.75 LITER 14.99	CRYSTAL PALACE 1.75 LITER 10.99	DOMAINE CHANDON NAPA VALLEY BRUT 750 ML 9.99	MARTIN'S V.V.O. SCOTCH WHISKY 1.75 LITER 18.99	INGLENOK NAVAL CHABLIS 4 LITER 7.99
CHRISTIAN BROTHERS BRANDY 1.75 LITER 15.99	POPOV 80 PROOF VODKA 1.75 LITER 10.49	BACARDI BREEZERS 4 PACK 355 ML 3.99	CARLO ROSSI RHINE & PIANO 4 LITER 6.99	SMIRNOFF 80 PROOF VODKA 750 ML 7.99	MOUTON CADET RED & WHITE (FR) 750 ML 5.99
NEW JERSEY 750 ML 5.99	7-UP OR DIET 7-UP 1 LITER 9.99	BEER SPECIALS OFF THE FLOOR			

PROPRIETORS SELECTION

R. MONDAVI WOODBRIDGE SAUVIGNON BLANC 1.5 LITER 6.99	LINDEMANS (AUS) CHARDONNAY BIN 86 750 ML 5.99	BROLIO (ITAL) CHIANTI CLASSICO 750 ML 6.99	CAVIT (ITAL) PINOT GRIGIO 1.5 LITER 7.99	CINZANO (ITAL) ASTI SPUMANTE 750 ML 7.99	PIPER SONOMA BRUT 750 ML 9.99	SMI CHARDONNAY 750 ML 9.99
---	--	---	---	---	--------------------------------------	-----------------------------------

COORS/COORS LIGHT/EXTRA GOLD or EXTRA GOLD LIGHT
12 OZ. CANS, 12 PACK, CASE OF 24 **10.99**

HEINEKEN or AMSTEL LIGHT (DUTCH)
12 OZ. NM BTLs, 12 PACK, CASE OF 24 **16.99**

MEISTER BRAU or MEISTER BRAU LIGHT
12 OZ. CANS, 12 PACK, CASE OF 24 **7.99**

BROOKLYN LAGER
12 OZ. NM BTLs, PER 8 PACK **4.99**

COORS CUTTER NON-ALCOHOLIC
12 OZ. NM BTLs, PER 8 PACK **2.79**

BUD LIGHT or BUD DRY
12 OZ. LOOSE CANS, CASE OF 24 **9.99**

FINLANDIA 80 PROOF VODKA 1.75 LITER **19.99**

BEEFEATER 1.75 LITER **22.99**

BACARDI LIGHT or DARK RUM (BMP) 1.75 LITER **14.49**

EVERY FRIDAY FROM 5pm-10pm IS LADIES NITE AT BUYRITE

BUDWEISER 10.99 24-12oz. Cans Cash & Carry Only Coupons Expire 8/17/93	MOOSEHEAD 12.99 24-12oz. Bottles Cash & Carry Only Coupons Expire 8/17/93	MOLSON 12.99 GOLDEN ALE 24-12oz. Bottles Cash & Carry Only Coupons Expire 8/17/93
SEAGRAMS 11.99 7 1.75 L Cash & Carry Only Coupons Expire 8/17/93	SMIRNOFF 12.99 80° VODKA 1.75 L Cash & Carry Only Coupons Expire 8/17/93	GORDONS 12.99 GIN 1.75 L Cash & Carry Only Coupons Expire 8/17/93

NUTLEY BUY-RITE LIQUORS
558 Franklin Ave. • Nutley • 667-1315
OPEN: Mon.-Sat. 9am-10pm Sundays 12pm-6pm

THIS STORE IS INDEPENDENTLY OWNED & OPERATED

Prices Effective Wed Aug 11-Tues Aug 17

* Cash & carry on all items • All prices subject to sales tax • We reserve the right to limit quantities • Manufacturer's rebates are limited to one rebate per household

OUR OPINION

Making the difference

We do not know if any official recognition has been taken of Ed O'Neil's latest achievement on behalf of Belleville. Tired of seeing underbrush and debris obscuring the approach to the Rutgers Street Bridge, Ed took it upon himself to clear the land.

"It could become a nice little park," Ed told the Belleville Times.

Not the State of New Jersey, nor Essex County, nor the Township of Belleville — nor any of the volunteer organizations of Belleville, for that matter — did it. It took one man to have the initiative and the strength of will to do it, and it has been 48 years since a younger Ed O'Neil wore the uniform of his country.

It could be said that there are so many other problems daunting us that a beautification project does not have a high priority among the Township's needs. Ed O'Neil knows otherwise.

He knows that perhaps the biggest problem facing Belleville is indifference, and he has no patience for that.

It is one more service that Ed O'Neil has performed for the community. This time, he had to do it without his longtime friend and partner Brud Hanly, but the spirit of both men are evident in what has been accomplished.

A familiar refrain

The reaction to the adoption of President Bill Clinton's deficit reduction plan was strong and angry. All the Republicans and many Democrats fought it to the last vote.

It was not the kind of tax increase plan that any Congressman wants to take back to the home district. And if history is any guide, it could well endanger the present Democratic control of Congress.

If, as some predict, there will be an immediate dip in the economy as a result, it will not make Clinton a popular man.

The same thing happened here in New Jersey when Governor Jim Florio put through a distasteful tax increase bill. It put the Republicans in charge of the State Legislature.

But it also saved the State from insolvency.

Today, people from Washington are coming to Trenton to see how Jim Florio did it.

It remains to be seen if the public has forgiven Jim Florio for the bitter fiscal medicine he prescribed. But the results of that policy outweigh the political cost, and the same should hold true for Mr. Clinton. For the country's sake, we hope so.

Aside From That

By: Howard Klausner

Editor Howard Klausner is off to his two weeks of vacation with the Kool Kukumber Boys on their summer trip to Camp Whadda, for a seminar on Official Jolsey.

Camp Whadda, of course, utilizes one of the most common words of Official Jolsey, used in such expressions as whaddyaknow, whaddajerk, whaddayakemefor and whaddayagonnadoaboudit.

Fifth Ward Councilman Harry Zilch is responsible for providing the beer and cookies.

Official Copy Cat Baldassaro DiVincenzo Mitten will be back from his trip to Bermuda and take up his usual post at Town Hall, just out of sight but well within earshot of just about everything.

Enjoy!

YOUR OPINION

New Jersey is Big on Business

To the editor:

The swift rise of our nation as an industrial giant and global leader in business affairs was one of the countless achievements that has made America great.

In fact, it was President Calvin Coolidge who so aptly said it in January of 1925: "The business of America is business."

Clearly, such has not been the case in New Jersey in our most recent past. Our state's business climate has become so unattractive and littered with regulations and higher taxes that it could be said the business of New Jersey has been to do away with business in New Jersey.

But that is about to change.

Under the leadership of Speaker Garabed "Chuck" Haytarian and his "Blueprint for Economic Growth," the Republican Legislature took the initiative to begin to reshape New Jersey's image as an anti-business state and restore economic prosperity to our citizens.

In the expectation of creating thousands of new jobs in the

private sector, a package of Republican bills sailed smoothly through both houses of the Legislature and were recently signed into law.

With these new pro-business incentives firmly in place, we will finally begin removing the obstacles standing in the way of economic expansion and lure additional businesses to New Jersey.

There is no doubt these measures will go a long way towards sending the right message to New Jersey businesses and will help create new jobs by attracting out-of-state firms to New Jersey.

The bills which became law will give small businesses a tax break and prevent dual taxation; provide a special corporation business tax rate for businesses organized as S corporations under the federal tax code; repeal the business personal property tax; provide a corporation business tax credit for increased investments in research and development activities, give an investment tax credit to businesses that create new jobs, and provide an investment tax credit for manufacturers.

The intent of these five measures is clear: to stem the exodus of businesses from here to other states, encourage expansion and entice out-of-state firms to come to New Jersey.

All sectors of the state's economy will benefit from these business incentives. The tax credits and, in the case of the S corporation legislation — tax reform, will provide a stimulus to the state's service industry, the wholesale and retail trade industry, and small business entrepreneurs whose future patterns of growth depend on lowering business expenditures.

Because of our vigorous efforts, New Jersey will now be able to send a strong message to the business community, here and across the nation, that New Jersey is serious about providing a much more attractive economic climate.

Once again, the business of New Jersey has become business.

Marion Crecco

Assistant Majority Leader District 34

Friends of the Library Speak

To the editor:

Coercion means restraint by force.

Yet at the recent budget meeting, Mr. C.P. Vander Zwan accused Friends of the Library of "coercion." The members of Friends of the Library graciously perform volunteer services and fund raising activities that benefit the library and the entire community. They are the finest examples of Americans to be found.

Mr. Vander Zwan refers to "angels on the ceiling" as an example of a misuse of part of the benefactor's legacy. By "angels on the ceiling" he means the trio of art treasures that grace the ceiling of the Carnegie Reading Room. These art treasures compare favorably with those on the ceiling of the Sistine Chapel in Rome.

I hope Mr. Vander Zwan will faithfully use the library card that is available to him at the library. Then he will come to appreciate the untiring, truly American volunteer work and services of the Friends of the Library, to learn the esthetic, as well as the dollar value of art treasures, and to enjoy the professionalism, courtesy, and expertise Ms. Adrea Cohen and her able staff graciously offer to him.

Martin J. O'Malley Jr.

WE WELCOME LETTERS

...of interest to our local area. They should be short and to the point, they must be signed for attribution and contain the address and telephone number for verification.

Flight #198



A feature of The Nutley Sun, the Belleville Times and Bloomfield Life

By Frank Orechio

• **PRESIDENT CLINTON** and the leaders of the western nations, England, Germany, Italy, France and Russia should be ashamed of themselves for the developments that are occurring in Bosnia. The Serbian onslaught includes all kinds of inhumanities, murder, rape — the worst offenses that mankind could commit. The blame must be shared by Clinton and the leaders of the western powers. After issuing threats of using force to stop the Serbs, Clinton and his European pals backed off and let Bosnia go down the drain.

We hear leaders screaming for an effort to bring charges against Iraq's Saddam Hussein for crimes against humanity. Who will bring charges against those who have permitted the same vicious crimes against the citizens of Bosnia?

• **PROFESSIONAL** politicians are assessing the gubernatorial possibilities of Jim Florio and Chris Whitman. In evaluating Whitman's status, it is pointed out that she started the Primary Election campaign 25 points ahead of her chief rival, Cary Edwards. By Election Day, her lead slipped to seven points.

Whitman also has another problem. She received 159,666 votes. Cary Edwards, Jim Wallwork and two other

candidates received 239,765.

Whitman's first job is to convince the 239,765 Republicans who didn't vote for her that she merits their support. Beyond that objective, Whitman has to assure county leaders like Essex County GOP Chairman John Renna she will not penalize them for opposing the candidacy. Her chief political operator apart from her brother is a guy who earned the reputation for being an expert at negative campaigning. The sense of some politicians is that negative campaigning is a thing of the past.

• **NATIONAL** columnist, Georgie Ann Geyer, focused her attention on the night of May 18 in Miami when 13 people — in the Metropolitan Dade County Commission — voted to repeal a 13-year-old ordinance declaring English the official language of local government. She further observes, "And the United States began a journey — that of becoming no longer an independent and sovereign country." I agree with her 100 percent. I resent foreigners requiring Americans to recognize a second, third and fourth language as the languages of our country. I believe as my mother and father did — and they are immigrants from Italy — when you seek out America, it is one country and it should be one language — the English language. Shame on those that advocate equal standing for other

languages foreign to America.

• **TOM D'ALESSIO'S** Third Annual Essex County Executive's Picnic will be held at the Green Meadows Farms, Roseland, September 26th, from 1:00 to 6:00 pm. Tickets for adults are \$25, and children, \$10.

• **AN** Associated Press story appearing in Sunday's Star Ledger indicated that Pope John Paul II said that "celibacy is not essential to the priesthood," but he insisted that the Vatican would continue to advocate the ideal and keep its priests from marrying. In the early days of the Roman Catholic Church, even the Pope acknowledged that priests were allowed to marry. It's obvious that celibacy is a man made rule — and man could change the rule.

Celibacy is in conflict with the biological make up of man, and woman for that matter. He won't ask me, but if Pope John Paul did, I would offer an opinion that priesthood should not prevent marriage.

• **REPUBLICAN** gubernatorial candidate Christine Whitman has created a campaign committee entitled, "Council for Economic Recovery". The group will be led by Malcolm Forbes Jr., president and chief executive of Forbes Inc.; and Lawrence Kudlow, senior managing director and chief economist for the Wall Street firm, Bear Stearns & Co. Inc. Kudlow was Ronald Reagan's deputy federal budget director. The group will be expected to promote Whitman's economic proposals including reforming the budget regulatory process, tax credits for industry and the privatization of the New Jersey Sports and Exposition Authority assets including the stadium, arena, the Meadowlands and Monmouth Racetracks. That is a crackpot idea.

Belleville Times

Serving Belleville Since 1909

(USPS 049-220)

Publisher: Frank Orechio
Arnie Ziem
General Manager
Published Every Thursday
At 155A Washington Ave.
Belleville, N.J. 07109

Second-Class Postage Paid
At Newark, N.J.

Postmaster: Send address changes to:
The Belleville Times, 155A Washington Ave.,
Belleville, NJ 07109

Editor: Howard Klausner
Social Editor: Helen Maguire
Sports Editor: Michael Lambert
Advertising: Rene Theodore
Art Director: Diane Lombardy
All departments call:
759-3200
Fax: 667-3904

Annual Subscription: \$16.00
Senior Citizens: \$ 8.00



John Renna



Christine Whitman, Lawrence Kudlow, left, Malcolm Forbes Jr., right

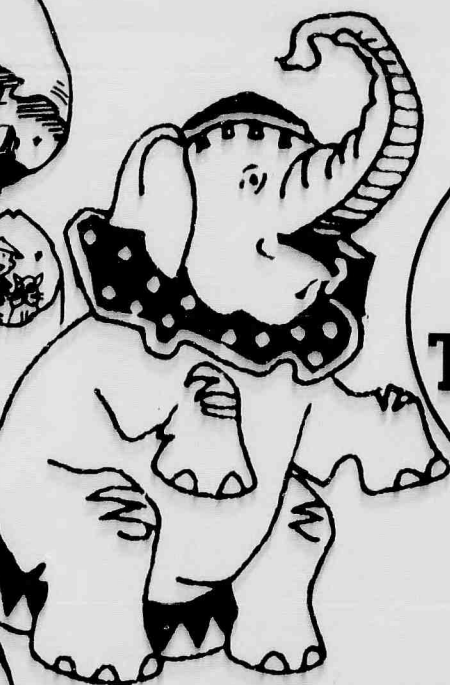
STYERTOWNE**SHOPPING CENTER****SIDEWALK
SALE**

Thursday - Friday & Saturday
August 12th - 13th - 14th

FUN FOR THE ENTIRE FAMILY

Come Join the FESTIVITIES
Clowns - Balloons - Giveaways

FREE POPCORN
FOR THE KIDS



COME SEE
LISA
THE BABY ELEPHANT

Appearing :
Thursday, August 12th
11am - 12pm

SHOP THESE MERCHANTS
FOR \$ SAVINGS GALORE

THE UPPER PLAZA

Bertell's Liquors	U.S. Post Office
Corbo Jewelers	Valley National Bank
EDM Gallery	The New Printed Word
Dresses Etc. Etc.	Book Store
House of Choy	Super-X Drugs
McCrory's	Grand Union
Sweetheart Bridals	Phoenix (Ladies Boutique)
Rowe Manse Emporium	Bernie's Youth Center
Styertowne Bakery	Shoe Town
Albert A. Stier Inc. (Real Estate)	

THE LOWER LEVEL

Joel's Sports of Clifton	Rowe-Manse Emporium
Wildflower Ice Cream	Kids Emporium
The Shoe Doctor	(shoe & apparel for children)
(shoe & leather repair)	Salon De Charles
The Shoe Emporium	Ashley's Restaurant
Nick's Barber Shop	& Night Club
Printed Word	Astro Bowl
(Bookstore Annex)	Brava (Ladies Fashions)

Celebrating Our 41st Anniversary

STYERTOWNE SHOPPING CENTER HAS EVERYTHING

" A Family Tradition Since 1952 "

Route 3 and Bloomfield Ave. Clifton

• Free and Easy Well Lighted Parking Area • Security Officers on Duty •



Crafts for teens, adults and children have been popular this summer at the library, with a new craft made daily from Monday to Wednesday with instructor Zita McGarry. "My Garden Wall Panels," "Fabulous Faces," and "Clown Face Magnets" are upcoming programs, for which you must register to participate.

Films at Library

On Thursdays at 1 p.m., the feature film class will show "Home Alone" on Aug. 12, "What About Bob?" on Aug. 19, "Don't Tell Mom the Babysitter's Dead" on Aug. 26.

The Friday Film Musical Class will feature "Carousel" on Aug. 13, "Mame" on Aug. 20, and "Showboat" on Aug. 27, at 12:30 p.m.

If you have a new or almost new musical video or opera that you would like to donate to the library, please bring the contribution to the library, to the attention of Adrea Cohen.

If your organization would like to make video contributions to the library, contact Adrea Cohen at 450-3434.

Trip to New York Stock Exchange

The Friends of the Belleville Public Library and Information Center are planning a trip to the New York Stock Exchange on Oct. 12 at 10 a.m. The cost for the trip, including the bus and lunch, is \$25. Please register at the Circulation Desk of the Library.

BOOK MARKS

Calendar of Events

Exhibits: An art exhibit by Simone Klausner is on exhibit in the Trustees Gallery of the Belleville Public Library and Information Center, 221 Washington Avenue, until Aug. 31.

The Avon Bottle Collection of Isabel Wittlinger is on display in the large case on the second floor of the Belleville Public Library and Information Center.

Aug. 12 — The film "Home Alone" will be shown at 1 p.m., as the Thursday film class showing, at the Belleville Public Library and Information Center, 221 Washington Avenue.

The Shafter Branch Library, 30 Magnolia Street, will have their rehearsal for "Celebrate Books" at 10 a.m.

Aug. 13 — A video will be shown at 10:45 a.m. at the Shafter Branch Library, 30 Magnolia Street.

The Friday Video will be shown at 2 p.m. in the James J. Cozzarelli Jr. Children's Room, Belleville Public Library and Information Center, 221 Washington Avenue.

The Friday Musical Film Class will see the film "Carousel" at 12:30 p.m. at the Belleville Public Library and Information Center, 221 Washington Avenue.

Aug. 16 — A craft program for teens and adults entitled "My Garden Wall Panels," will take place from 11 a.m. to noon at the Belleville Public Library and Information Center, 221 Washington Avenue.

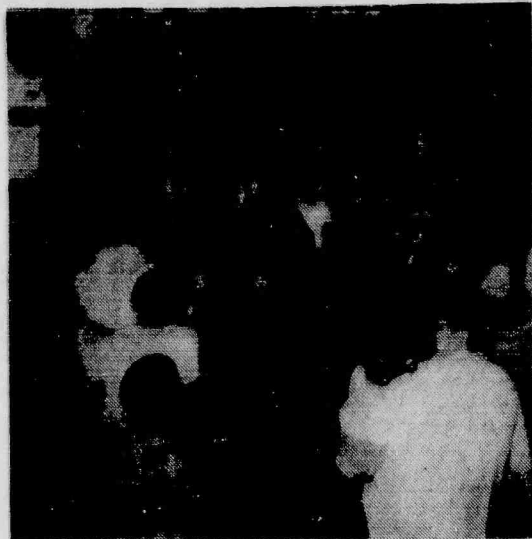
The Shafter Branch Library, 30 Magnolia Street, will feature a reading of "500 Hats of Bartholomew Cubbins" at 10:45 a.m.

Bob Conrad's Festival of Fun will take place at 7:30 p.m. at the Belleville Public Library and Information Center, 221 Washington Avenue.

Aug. 17 — A Craft Program for teens and adults entitled, "Fabulous Faces," will take place from 11 a.m. to noon at the Belleville Public Library and Information Center, 221 Washington Avenue.

"Sculpt An Airplane," a crafts program, will take place from 10:45-11:15 a.m. at the Shafter Branch Library, 30 Magnolia Street.

"Make Music," a craft class, will take place at 10 a.m. in the



Summer Storytime in the James J. Cozzarelli Jr. Children's Room with Melissa Kopecky, Children's Services, brings out a large group of children to "We Celebrate Books!", the theme of the summer reading program. Remember to visit the library this summer and all year to take out books, media, and to participate in the many programs.

James J. Cozzarelli Jr. Children's Room, Belleville Public Library and Information Center, 221 Washington Avenue. Bring a small container with a lid.

Aug. 18 — "Clown Face Magnets," a teen and adult craft, will take place from 11 a.m. to noon at the Belleville Public Library and Information Center. You should be registered to participate in the program.

The Shafter Branch Library, 30 Magnolia Street, will feature a storytime at 10:30 a.m. for those ages 2 1/2-3 1/2 years of age and at 11:30 a.m. for those 3 1/2-6 years of age.

A Storytime for children will take place at 10 a.m. in the James J. Cozzarelli Jr. Children's Room, Belleville Public Library and Information Center, 221 Washington Avenue.

Aug. 19 — Andy the Clown celebrates books at 10:45 a.m. at the Shafter Branch Library, 30 Magnolia Street.

The film, "What About Bob?" will be shown at 1 p.m. in the Thursday Film Class at the Belleville Public Library and Information Center, 221 Washington Avenue.

Library books on cassettes

The library has a growing collection of books in audiocassette form, which you might enjoy on the way to work in your car, or on your summer vacation. A sampling of some titles include "Shall We Tell the President?" by Jeffrey Archer, "Patriot Games," by Tom Clancy, "A Cry in the Night," by Mary Higgins Clark, "Lady Boss," by Jackie Collins, "Mortal Fear," by Robin Cook, "Dazzle," by Judith Gould, "The Firm," by John Grisham, "The Sun Also Rises," by Ernest Hemingway, "Storm Warning," by Jack Higgins, "The Bourne Supremacy," by Robert Ludlum, "A Ruling Passion," by Judith Michael, "The Sands of Time," by Sidney Sheldon, "Gorky Park," by Martin Cruz Smith, "Houses Without Doors," by Peter Straub, "Burden of Proof," by Scott Turow, and "Hollywood," by Gore Vidal.

Bob Conrad's Festival of Fun

On Aug. 16 at 7:30 p.m., as part of the Eight Great Live Monday Nights at the Belleville Public Library and Information Center, 221 Washington Avenue, Bob Conrad, puppeteer, ventriloquist, balloon sculpturer, and much more, will present a program entitled, "Bob Conrad's Festival of Fun." This program is filled with audience participation, balloons, magic and fun. You will have the opportunity to meet Fred, the magic talking table, Rickey the Rabbit and mind boggling magic objects that appear and disappear before your eyes. Register for the program in the James J. Cozzarelli Jr. Children's Room, Belleville Public Library and Information Center.

Book, media donations accepted

The Belleville Public Library and Information Center, 221 Washington Avenue, will accept donations for books, audiocassettes, CD's, or videocassettes in honor of an individual or individual's birthday, anniversary, marriage, graduations, etc. An appropriate book plate will be inserted in the book or media stipulating the donor. To make a donation, call Adrea Cohen at 450-3434.

COUPON **COUPON** **COUPON**

TIP TOP **EXTERIOR CAR WASH**

ONLY 99¢ **7:30 AM TO 7:30 PM**

+ TAX

VALID WED., & THURS., AUG. 11TH & 12TH - SUN., MON., TUES., WED., & THURS., AUG. 15TH-19TH

NOT VALID ON FRI. & SAT.

TIP-TOP CAR WASH

485 RIDGE RD., NO. ARLINGTON • 991-3629



Belleville Times May Be Purchased At These Local Dealers:

ALFIORI'S DELI
444 WASHINGTON AVE.
BELLEVILLE

GAROFALO'S
323 UNION AVE.
BELLEVILLE

MOR-THAN CARDS
51 FRANKLIN ST.
BELLEVILLE

ALICE & MAC
443 WASHINGTON AVE.
BELLEVILLE

IN & OUT FOODSTORE
544 WASHINGTON AVE.
BELLEVILLE

NINO'S
584 UNION AVE.
BELLEVILLE

ANKEETA
498 UNION AVE.
BELLEVILLE

J & S LUNCH
31 BELLEVILLE AVE.
BLOOMFIELD

PLAZA DRUGS
351 FRANKLIN AVE.
BELLEVILLE

B&B
300 WASHINGTON AVE.
BELLEVILLE

KENNY'S CORNER
48 FRANKLIN ST.
BLOOMFIELD

ROSEBUD
528 JORALEMON ST.
BELLEVILLE

BELLEVILLE HOBBY
386 MAIN ST.
BELLEVILLE

KERNER'S
126 WASHINGTON AVE.
BELLEVILLE

SALAD BOWL
83 BELLEVILLE AVE.
BLOOMFIELD

C & DE DELI
109 WASHINGTON AVE.
BELLEVILLE

KRAUZER'S
37 FRANKLIN ST.
BELLEVILLE

SHOPPER'S EXPRESS
304 BELLEVILLE AVE.
BELLEVILLE

CVS
412 MAIN ST.
BELLEVILLE

LEE ANN'S
67 FRANKLIN ST.
BLOOMFIELD

STARR'S
111 NEWARK AVE.
BELLEVILLE

EVELYN'S
56 HARRISON ST.
BELLEVILLE

MARRACH'S DELI
221 BELLEVILLE AVE.
BELLEVILLE

TOBACCO KING
547 WASHINGTON AVE.
BELLEVILLE

FRADE'S DELI
311 UNION AVE.
BELLEVILLE

MAUTONE'S
380 UNION AVE.
BELLEVILLE

TOWNE DELI
650 JORALEMON ST.
BELLEVILLE

GARDEN STATE NEWS
750 WASHINGTON AVE.
BELLEVILLE

MICHAEL V'S LUNCHEONETTE
201 WASHINGTON AVE.
BELLEVILLE



Esex County's multicultural community provides an exciting environment to live, work and attend school. Prepare yourself for the future by coming to ECC where you can take advantage of our diverse curriculum, quality programs and outstanding services.

University Heights Campus
303 University Avenue
Newark, NJ 07102
(201) 877-3100

West Essex Campus
730 Bloomfield Avenue
West Caldwell, NJ 07006
(201) 228-3968

Fall semester application deadline-August 15, 1993 for matriculating students
Advisement/registration (returning students only) August 23-26, 1993
Advisement/registration (new and returning students) August 30-September 1, 1993
Advisement/registration (non-matriculating students)-September 1, 1993

ESSEX COUNTY COLLEGE
Building A Tradition Of Excellence

Stork Club

Samantha Jo O'Halloran

A first child, a daughter, Samantha Jo, was born to Mr. and Mrs. J. Joseph O'Halloran of Nutley Aug. 1 at Columbus Hospital, Newark. Birth weight was 8 pounds, 9 ounces.

Mrs. O'Halloran is the former Barbara Moraski, daughter of Patricia Moraski of Belleville and the late Frank Moraski. She is with K Mart Corp., Belleville. Mr. O'Halloran, son of Vicki O'Halloran of Nutley and the late Joseph O'Halloran, is with New Jersey Highway Authority, Woodbridge.

Taylor John Smith

A first child, a son, Taylor John, was born to Mr. and Mrs. John David Smith of Nutley June 3 at Mountside Hospital, Montclair. Birth weight was 7 pounds, 3 ounces.

Mrs. Smith is attorney Janet Gerard Smith, daughter of Mr. and Mrs. Gerard C. Gerard of Bloomfield. She maintains a private law practice in Nutley where she specializes in matrimonial law. Mr. Smith is the son of Mrs. Patricia Scarcelli of Belleville and the late John A. Smith of Ramsey. He is a chief lineman for Public Service Electric and Gas.

Ryan Francis McCarthy

A first child, a son, Ryan Francis, was born to Stephani Schlesinger and Cliff McCarthy of Belleville June 10 at Clara Maass Medical Center, Belleville. Birth weight was 5 pounds, 5 ounces.

Mrs. Schlesinger is the daughter of Mr. and Mrs. Murray Schlesinger of Cliffside Park. Mr. McCarthy is the owner of Premium Custom Contracting. Great grandmother is Eleanor Warren.

Stephen Michael Hahula

A first child, a son, Stephen Michael, was born to Mr. and Mrs. Michael E. Hahula of Bloomfield May 13 at Mountside Hospital, Montclair. Birth weight was 5 pounds, 13 ounces.

Mrs. Hahula is the former Lucille Dettlaff, daughter of Mr. and Mrs. Victor Dettlaff of Bloomfield. Mr. Hahula is the son of Mr. and Mrs. Theodore J. Hahula of Belleville.

Giovanni Joseph Loreto

A second child, a son, Giovanni Joseph, was born to Mr. and Mrs. Michael Loreto of Belleville July 2 at Columbus Hospital, Newark. Birth weight was 8 pounds, 8 ounces. He is the brother of the late Michael Anthony Loreto, Jr.

Mrs. Loreto is the former Patricia Iacullo, daughter of Mr. and Mrs. Carmine Iacullo of Belleville. Mr. Loreto, son of Mr. and Mrs. Nicholas Loreto of Belleville, is a correction officer at Essex County Jail.

THIS IS BO, a beautiful tan and black German Shepherd, from one to two years old. He was picked up as a stray and nursed back to health by a loving family who just cannot keep him. He is now boarding at a veterinarian's. What this gentle, friendly boy needs is a caring home. Please help. Call 743-7242 and leave a message if you can adopt Bo.



(201) 759-3968

Licensed Dealer

BULLET HOLE

Specializing
Guns - Ammo - Bait & Tackle
Police Equipment - Indoor Target Range

Collector Guns
Buy - Sell - Trade

78 Rutgers Street
Belleville, N.J. 07109

NEW JERSEY UROLOGY ASSOCIATES P. A.

LOUIS J. DI BELLA JR., M.D. - IRA D. TANZER, M.D.

DIPLOMATES AMERICAN BOARD OF UROLOGY

We are participating physicians
in the Medicare Program and accept
assignment for all office visits,
consultations, and surgery.

OUR PRACTICE ENCOMPASSES THE FOLLOWING:

- Kidney, Bladder, and Prostate Surgery including Laser Prostatectomy
- All Urologic Cancers
- Stone Disease-Both Medical and Surgical Treatment Laser Lithotripsy and Shock Wave Lithotripsy at the Stone Center of New Jersey in Newark.
- Infertility
- Treatment of Impotence (With Insertion of Penile Prosthesis)
- Treatment of Urinary Tract Infection
- Cystoscopy and Vasectomy
- Prostatic Ultrasound

TWO CONVENIENT OFFICE LOCATIONS

180 FRANKLIN AVENUE

1265 PATERSON PLANK RD.

NUTLEY, NEW JERSEY

SECAUCUS, NJ

667-5666

867-1297

Events in the area

Fairs, flea markets, rummage...

Outdoor flea market, 9 a.m. to 5 p.m. Aug. 14, American Legion Post 109, Riverside and West Pleasant avens., Rutherford.

Giant outdoor flea market, 9 a.m. to 5 p.m. Aug. 15, Columbus Middle School, 350 Plaget Ave., Clifton (off Rt. 3 for Main Ave.) Fundraiser for Home and School Assoc.

Giant outdoor flea market, 9 a.m. to 5 p.m. Aug. 22, Mgr. Owens Park, Park Ave., Nutley (off Rt. 21 exit 8). Rain date: Sept. 4. Fundraiser for Nutley recreation and social programs. Over 100 vendors.

Giant flea market, 9 a.m. to 4 p.m. Sept. 11, Hoffmann-LaRoche parking lot at Kingsland St. and Cathedral Ave., Nutley. Sponsored by Roche Employee Assoc. Free parking and admission. Rain date: Sept. 18. For more information, call 235-5200.

Fundraisers...

Benefit concert, "From the 60s With Love", for Baby Lou and Stephanie Juliano, noon to 8 p.m. Aug. 14, Nutley Park Oval. Advance sales, \$10; at the gate, \$12.50. For tickets, call 235-0690.

Pancake breakfast, 8 a.m. to noon, Aug. 22, Belleville Knights of Columbus, 98 Bridge St. Adults, \$4; children 7-12, \$2.50; under 6, free. To benefit St. Peter's cemetery fund. Call mark Adueto at 759-4712 or Tom Doeffinger at 751-7144.

Three Little Bakers Dinner Theatre, and Atlantic City weekend, sponsored by Nutley Elks Club, Aug. 28-29. \$125 per person includes bus, one night at Holiday Inn, "Hello Dolly" at dinner theatre, racing if desired, day in Atlantic City. For information, call Claire Pope at 284-0631 or Carol Coleman-Gesey at 235-1234.

28th annual Festival in the Park, 10 a.m. to 5 p.m. Sept. 12, Memorial Park between Chestnut St. and Vreeland Ave., Nutley. Art, crafts, collectibles, displays. Free admission. Food available. Rain date: Sept. 26. Benefits Nutley Historical Society and the Kingsland Trust.

Annual luncheon, fashion show, noon, Sept. 25, Ramada Hotel, Rt. 3 East, Clifton. \$22. Sponsored by St. Mary's Rosary Society, Nutley. For reservation information, call Anna at 759-2184.

Second annual bookstall dinner, sponsored by Bloomfield Fifth Quarter

Club, 6:30 p.m. Sept. 29, Christ Church Hall, Park and Bloomfield Ave., Glen Ridge. Catered by Nightingales. \$25. Fundraiser for high school football team. For reservations, call Walter Smyth at 338-9071 or Ken Laver at 338-7084.

Other events...

Tenney Dorsey Orchestra, 7:30 p.m. Aug. 13, Brookdale Park, Bloomfield. Free summer concert series.

"Madama Butterfly" fully staged and costumed with full orchestra, 7:30 p.m. Aug. 18, Brookdale Park, Bloomfield. Free. Limited seating on bleachers. Own chairs welcome. Free.

Stanley Turzentine Jazz Concert, 7:30 p.m. Aug. 20, Brookdale Park, Bloomfield. Free.

Garden State Concert Band, 7:30 p.m. Aug. 27, Brookdale Park, Bloomfield. Free.

Vacation Bible School, 9 a.m. to noon, Aug. 30 to Sept. 3, Holy Trinity Lutheran Church, 158 Vreeland Ave., Nutley. For information, call 667-0256.

Picnic and much more, Sept. 12, Knights of Columbus, Belleville Council 835, 94 Bridge St. For more information, call Joe Wolf at 991-4930.

Auditions for "My Fair Lady," 7 p.m. Sept. 13, 14, 15, Glen Ridge Middle School, 235 Bloomfield Ave. Bring own music, preferably a song from the show or any other show tune. Production planned Nov. 19, 20, 21. Sponsored by Glen Ridge Cultural Committee and Family Theatre Society.

Youth Cafe Teen Fellowship, ages 13-17, 7 to 9 p.m. first Fridays, Union Baptist Church, 31 Conger St., Bloomfield (across from Watacasing Park, behind I.H.O.P.) Music, videos, discussion, fellowship, refreshments. For more information, call 743-6865 or 429-8327.

Weekly duplicate bridge games, sponsored by Bloomfield Recreation Commission, 12:30 p.m. Tuesdays, 7:30 p.m. Fridays, Bloomfield Civic Center, 84 Broad St. Partner provided if necessary.

Amateur radio license examinations, 7 p.m. fourth Tuesdays, Bloomfield Civic Center, 84 Broad St. Walk-ins O.K. For information, contact Carl, WA2BXQ338357.

St. Mary's offering religious education for public school students. Immediate registration suggested. Call 667-8239 for information.

Class reunions...

Bloomfield 1963, 1-800-22-CLASS.

Bloomfield June 1943, Helen Flannery, 66 Bloomfield High School, 160 Broad St., Bloomfield, 07003.

Nutley 1963, November 26, Landmark II. \$60 per person. For information, call Danny Geltrude, 661-1636; Ellen Travers, 661-2815; Jodi Mastronardi, 272-9665; Jeanette Paterno, (908) 852-3888; Joy Tolve, 284-1949 or Sandy Paterson, 661-0684.

Nutley 1943, planning 50th reunion Oct. 23. Classmates who have moved in the last five years or who have addresses for out-of-state classmates, contact Leanne O'Brien Falk, 47 Freeman Place, Nutley, 07110-3369.

Nutley 1953, 7:30 p.m. Nov. 6, the Fairmont, Little Falls. For information, contact Audrey Librizzi, 65 Hastings Ave., Nutley, 07110.

Belleville 1968, Oct. 8. Call 800-22-CLASS.

Belleville 1943, Oct. 9. Contact: BHS Reunion Committee, 335 DeWitt Ave., Belleville 07109.

Bloomfield 1944, April 22, 1994. Call 800-22-CLASS.

Bloomfield 1958, Oct. 30. Contact: Pat Galloto, 852 Broad St., Bldg. 07003.

Bloomfield 1973, Nov. 26. Call 800-22-CLASS.

Bloomfield 1983, Nov. 12. Call 800-22-CLASS.

Nutley 1973, Nov. 26. Call 800-22-CLASS.

St. Mary's School, Nutley, class of 1968, 25 year reunion. Call Bob at 666-7005, Adrienne at (908) 892-4088, John at 838-3180, Laura at 661-0382, Mike at (908) 257-7709 or Lorraine at 338-9402.

NEW PRESIDENT — Lucille Gasiewicz, right, past president of the Clara Maass Medical Center Auxiliary, hands over the reins of the organization to in-coming president Marie Vander Zwan. Both women are residents of Belleville. The change of command took place at a recent auxiliary meeting.

Work-related pain can strike managers and laborers alike

When we work hard all day, we expect fatigue. But we don't expect numbness, soreness or searing pain. Nevertheless, up to 10 percent of American workers do suffer disabling work-related pain that stems from a disorder known as repetitive strain injury — RSI.

RSI can strike carpenters, cashiers, concert pianists and computer operators — anyone who uses the same muscle groups to repeat the same motion over and over.

Last year, 61 percent of all private-sector occupational illness involved repeated trauma, triple 1982's number. The dramatic rise may be attributed to two significant changes in labor practices — widespread computer use and expanded assembly line techniques. In the past, workers may have completed projects from start to finish. Today, however, tasks are often broken down into specific categories, with each worker assigned to carry out only one part of each task.

Formerly, a clerk used various devices to carry out diverse chores. Now she or he may strike computer keys tens of thousands of times over, day after day. Butchers used to work for days, single-handedly turning a complete carcass into roasts, steaks, chops, stew meat and sausages. Today, 300 people may work on one cow, each standing on the disassembly line; each wielding the same motion — quickly and repeatedly — causing meat cutters

and packers to report the nation's highest rates of RSI.

Both the clerk and the butcher strain specific muscles and tendons hour after hour, without time for recovery. Both may suffer RSI — and pain so severe they plead with their doctor to surgically repair their pinched nerves and injured tendons. But surgery won't help if a worker returns to the same job and the same working conditions.

A modified work-place is the real cure for RSI. When several workers report RSI, management should engage experts to evaluate the company's work stations. These experts might include a physiologist, an orthopaedic surgeon or an authority in ergonomics (the science of designing and arranging equipment to suit workers' physical characteristics.)

Such a team can assess the problem and make reasonable recommendations to reduce work-related injuries, cut absenteeism and increase productivity.

Some work-place modifications are simple and cost little, such as raising or lowering a chair or table top, adding forearm rests to chairs or changing the grips on tool handles.

Simple position changes often help. Computer operators can adjust the keyboard incline or wear wrist splints so their hands don't flex downward and strain wrists and fingers.

Also, workers who use repetitive motion should take hourly breaks. They should stand up and walk about a bit. Simple stretching exercises are helpful. Workers might reach their arms and hands overhead, then out to the sides; shrug their shoulders high, then relax and rotate them, first forward, then back; rotate hands to the left, then the right; bend gently at the waist to loosen up the back, waist and trunk muscles. These and other simple actions rest strained muscles and tendons and, coupled with work-place modifications, they may help prevent repetitive stress injury.

(This column, written by Dr. Daneco DiPaolo, is a public service of the University of Medicine and Dentistry of New Jersey.)

LOSE WEIGHT Feel GREAT

leanline™

1-800-624-3108

NUTLEY

American Red Cross
169 Chestnut Street
Mon. 7:15 pm, Tues. 9:15 am

BLOOMFIELD

Essex Manor
41 Broughton Avenue
Tues. 7:15 pm

Sandy Lane Nursery School

"A CHILD'S WORLD
WHERE PLAYING
IS LEARNING"

634 MILL STREET
BELLEVILLE
751-6380

Days & hours to meet your needs.
Hours 7 - 6 p.m.

Developmental Programs in

- Arts
- Music
- Skills
- Language
- Social Development

New Infant Program

Continuous Day Care Program for working mothers. Nutritionally. Balance Lunch. State Licensed Certified School and Teachers

SERVING THE COMMUNITY FOR 20 YEARS

Dedicated to a Program of Early Childhood



For the parent who
works all day we
offer Full Day
Kindergarten

GRAND UNION

YOU'LL SAVE MORE WITH OUR RED DOT SPECIALS ADVERTISED & UNADVERTISED

U.S.D.A. Choice Ultra Trim Beef

Rib Steak

Lb. **2⁹⁹**

Good Source of Vitamin A

Tree Ripened Nectarines

or Peaches
or Red or
Black Plums

Lb. **99¢**

Perdue Fit N Easy - U.S.D.A. Grade 'A' Fresh

Boneless Chicken Breast

Lb. **2⁹⁹**

Assorted Varieties

Luigi Vitelli Pasta

1-Lb.
Pkgs. **3⁹⁹**

Assorted Regular or Lite Varieties

Ken's Steak House Salad Dressing

8-oz.
Btl.

79¢

Assorted Varieties - Tortilla Chips (10-oz.) or

Eagle Thin Potato Chips

5.5-oz.
to 6-oz.
Bags

99¢

Solid or Salted AA Quarters

Grand Union Butter

1-Lb.
Pkg.

99¢

Solid White in Oil or Water

Chicken of the Sea Tuna

6.125-oz.
Can

99¢

Regular or Diet - Slice, Mountain Dew, Crystal Pepsi, Calt. Free Pepsi, Schweppes Raspberry or Plain Ginger Ale, Mug Cream or Root Beer or

Pepsi or Diet Pepsi

2-Liter
Btl.
Plus Deposit
where req.

99¢

SUPER COUPON

Pasteurized

(612)

Friendship Sour Cream

One
1-Lb.
Cont.

69¢

With This Coupon And Purchase of \$5.00 Or More. Good Aug. 8 Thru Aug. 14. Limit One Coupon Per Family.



SUPER COUPON

Chilled

(613)

Grand Union Premium Orange Juice

One
Half Gal.
Cont.

99¢

With This Coupon And Purchase of \$5.00 Or More. Good Aug. 8 Thru Aug. 14. Limit One Coupon Per Family.



SUPER COUPON

White or Designer

(614)

Bounty Paper Towels

One
72-Sheet
Roll

69¢

With This Coupon And Purchase of \$5.00 Or More. Good Aug. 8 Thru Aug. 14. Limit One Coupon Per Family.



Effective Sun., Aug. 8 thru Sat., Aug. 14. We reserve the right to limit sales to 3 pkgs. of any item. Not responsible for typographical errors.

Belleville

SPORTS

Grady injured, Belleville in semis

LaRose 2B keys Bruin rally

By Mike Lambert

It was playoff baseball at its most dramatic last Sunday at Belleville Stadium.

On one side stood the Crescent Eagles, who needed to split a doubleheader in order to advance to Verona for the ECBL semi-finals. On the other side were the Belleville Bruins, who were one game away from the end of the 1993 season.

What followed were five and one half hours of riveting baseball and when it finally concluded, the Bruins were still alive, sweeping Crescent by scores of 8-7 and 6-5 to advance to the next round, where powerful Verona awaits.

Belleville took a 27-16 mark into last Monday's game against the Verona Twins in the start of a best two out of three series. The Bruins were host to Verona last Tuesday and would play at Verona last night, if necessary.

Should Belleville upset Verona, the Bruins would then play the South Orange-Cranford survivor for the ECBL championship series, which begins tonight at the home of the highest seed. The series continues Saturday, and if necessary, Sunday.

Belleville had dug itself a hole by losing to Crescent 7-5 in the first game last Saturday at Kean College. In that game, the Bruins held leads of 2-0, 4-2 and 5-4, but were unable to sustain it.

Because the Bruins had finished ahead of Crescent in the regular season standings, Belleville would be home for the next two games of the series. Those two games were slated for a doubleheader last Sunday and the fans in attendance certainly were entertained.

In the first game of the twinbill, Crescent scored two runs in the first inning, but Belleville responded with four in the last of the second. The key to the rally came on a foul tip, or in Crescent's case, an apparent strikeout.

Belleville's Pat Grady swung and just fouled off a ball on a 2-2 count with the bases loaded. Crescent, and the home plate umpire, felt the

ball was swung on and missed and that the catcher had just dropped the ball.

The Bruins argued the call and the second base umpire ruled in Belleville's favor, giving the Bruins new life. Grady would not be denied a second opportunity and blasted a double to score Mike King, Sal Tremel and Mike Salvanto, all of whom had reached via walks.

Mike DeBiase then singled to score Grady with the fourth run, but that run was costly. Grady snapped a hamstring rounding third base and an inning later, he was pulled from the lineup.

Crescent tied the game in the top of the fourth, but the Bruins responded with three in the last of that inning. Once again, the walks hurt Crescent as Salvanto and Grady received free passes and Jim LaRose blasted a homer over the right field fence.

In the fifth, Salvanto hit a home run over the right field wall to increase Belleville's lead to 8-4.

Fran Gallagher was the Bruins starting pitcher and he worked out of trouble throughout the game. He allowed a run in the sixth and two more in the seventh as the Bruins defense let down after gaining the four run lead. Nonetheless, Gallagher pulled through, striking out the final batter with the tying run at third base.

Gallagher (6-4) fanned 11 batters and allowed nine hits. Grady and DeBiase led the Bruins offense with two hits each.

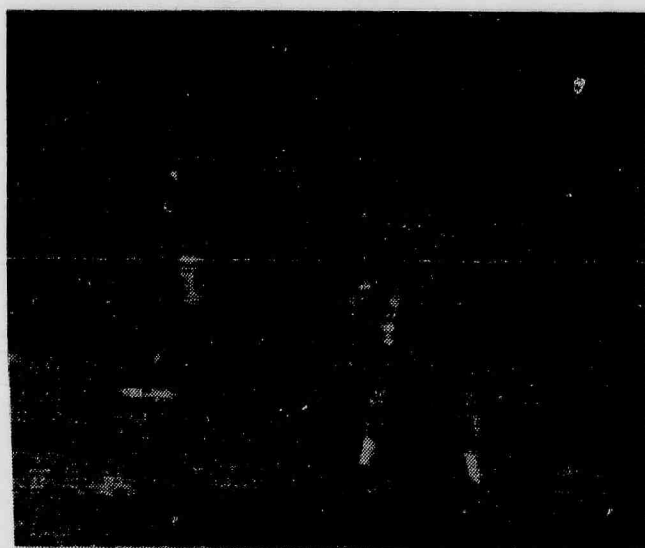
In the second game of the doubleheader, Gallagher was once again the starting pitcher. Crescent scored first in the top of the third, but the Bruins came back with a solo run in the last of that inning.

King started the rally by drawing a walk. Jason Nardachone executed a perfect hit and run play, hitting a single to the opposite field and moving King to third base. Tremel then grounded out, King scoring on the play.

The Bruins took a 2-1 lead in the fourth. Manager Bill Ingraham blasted a 400 foot double and moved to third on a ground out.



Belleville manager Bill Ingraham gets a hold of fast ball and sends it 400 feet for a double during second game of doubleheader last Sunday afternoon at Belleville. Ingraham had winning hit in extra innings as Bruins advanced, beating Crescent Eagles.



Pitcher Fran Gallagher gets to base to catch throw from first baseman Mike Salvanto during third inning of second game. Gallagher pitched 11 innings spanning the doubleheader and did very well.

Rich Quine then fought off a 1-2 pitch and hit a sac fly to score Ingraham.

In the fourth, Salvanto walked, stole second and went to third on a ground out. Ingraham was walked

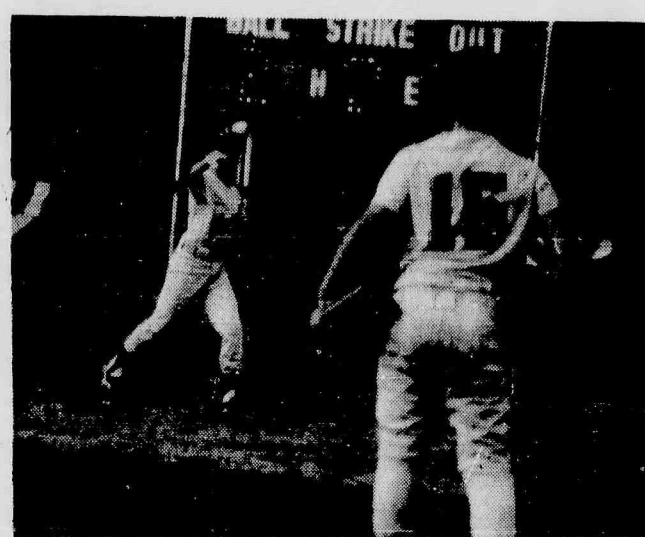
intentionally. DeBiase hit a sac fly to score Salvanto. Paul Mirabella, who had entered the game in relief of Gallagher, hit a ground ball to

(Continued on page 10)

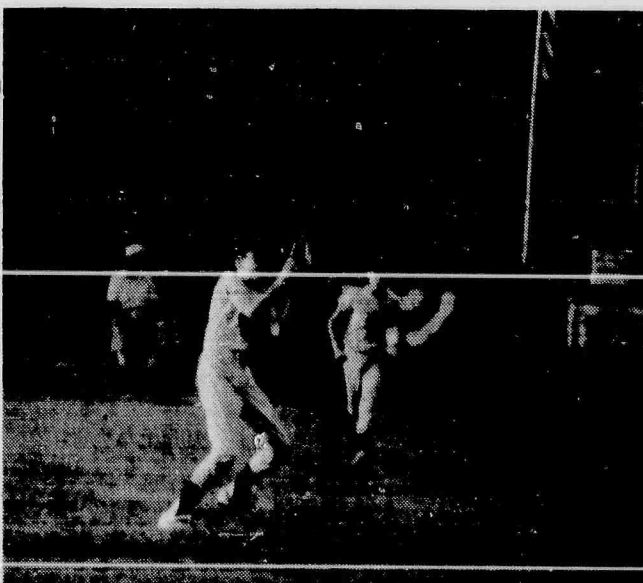
Little leaguers battle Bloomfield



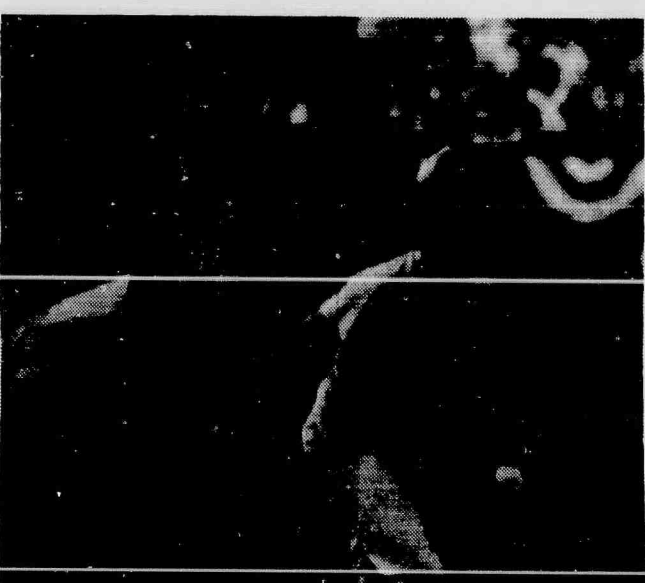
Belleville pitcher throws home in third inning of game with Bloomfield during tournament action at Marotti Field. Belleville dropped a heartbreaking 3-2 decision.



Second baseman throws to first base for out. Both Belleville and Bloomfield played outstanding baseball.



Belleville shortstop hauls in pop fly to end Bloomfield threat in second inning.



Coach Earl Wake gives instructions to Belleville player on third base line.

A follow up memo to Donald Fehr, the leader of the baseball players union as the talk of a Labor Day strike nears.

A few weeks ago, I wrote a column basically saying that if Fehr and his players decide to strike on Labor Day of this year, they could very well be writing the death knell for the future of the game on the professional level.

Once again, Don, remember what happens on Labor Day weekend. The Eagles will be playing the Cardinals, the Giants are at Chicago, the Jets are host to Denver and on Labor Day night, there will be a football game played in Washington D.C. between friendly rivals Dallas and Washington.

Another words, the NFL season will commence the regular season that same weekend, and if you think the majority of sports fans will be wringing their hands over the thought of no baseball, you're in a further stage of dreamland than originally anticipated.

And if the NFL season isn't enough, teams from schools like Michigan, Notre Dame, Florida State, Miami, USC, Nebraska, Colorado and Ohio State will be throwing the pigskin around too.

And, as previously mentioned, football will carry us through the end of January, then basketball and hockey will keep the majority of sports fans occupied until late June. That leaves July and August, and somehow we'll get through the temptation of spending what is becoming exorbitant amounts of money to watch a number of prima donnas play baseball.

Hasn't baseball represented itself so well in 1993? There's the continuing adventures of one Vince Coleman, and his now infamous firecracker attack on fans following a game.

The only thing more stupid that Coleman's act was Eric Davis trying to explain that all the guys throw firecrackers and everyone in Davis' car got a big kick out of Coleman tossing an explosive at a group of unsuspecting fans, one of which was a two year old girl.

Of course, there is the episode where a yet unnamed Met squirted bleach at a group of reporters following the game. Then of course, there's Bret Saberhagen, who the Mets had to re-sign for big bucks.

Saberhagen hasn't been healthy since winning the Cy Young award back in 1989 and now, one day after throwing a temper tantrum in the clubhouse, he's out for a month, maybe more, after hurting his knee while warming up for a game.

The New York Yankees are finally in a pennant race, and haven't the fans reacted with excitement?

When the Blue Jays came to town last week for a key four game series, the attendance skyrocketed, and with it, the idiots came back in style.

The first group helped to embarrass Americans throughout by booing the Canadian National Anthem. (That really gives an edge to the home team). Then there were the various eruptions in the stands, climaxed by some idiot throwing a miniature bat into right field, in the direction of Jays' rightfielder Joe Carter.

Nothing like a good brawl in the stands to create some excitement, huh? Of course, Chris Russo of WFAN radio commented that that happens all over the country.

I don't think so, Chris. Believe it or not, there are plenty of parks where fans enjoy the game and don't have to cover their kids ears in the hope that some jerk sitting nearby doesn't scream profanities or some other stud decides six beers are enough and let's start a fight with the guy next to me because he looked at me funny.

All the bench clearing brawls in 1993 in baseball make some people think that hockey is a more civilized game. If you throw inside to a batter, it's carte blanche for that batter to charge the mound and for everyone from both dugouts to run out onto the field to join in.

Baseball has been without a commissioner since last fall, longer if you think that Fay Vincent was more a power hungry egomaniac than an ambassador for the game.

And so, while the game appears to be losing control on the field, the head of the players union has decided that the labor day strike is a good possibility and now the owners and union members will try and resolve things in the next few weeks in order to avoid a walkout.

Let's hope the games continue. But if they don't, let them walk. And may they never come back! There's enough good baseball being played around this country and it doesn't cost a family of four in excess of \$100.00 to enjoy watching it being played.

Here in Belleville, the Bruins and Crescent Eagles played an exciting doubleheader last Sunday that went down to the final batter. While none of those players will make it to the major leagues (one of Belleville's pitchers, Paul Mirabella did have a standout major league career) they provided an exciting level of baseball.

And nothing tops the excitement of kids playing little league ball. These guys are in it for the pure joy of baseball. A few weeks ago, a great game was played at the Belleville Little League field between neighboring rivals Belleville and Bloomfield. (There are pictures from that game in this weeks issue).

So, go ahead and strike. I love the game and will always be a diehard Cardinal fan. But I'm sure I speak for a lot of people when I say that this is not the best time to even consider a walkout, much less do it.

Think hard, Don. You still have time to avoid a disaster.

THIS WEEKS QUIZ

Let's stick with Belleville football. Which teams did the '79 Bucos defeat? What was that teams final record? Who led the team in rushing that year?

RECREATION ROUNDUP

Recreation soccer and touch football applications

Applications for the Belleville Recreation 1993 sports programs are now available in the schools and at the Recreation office. Boys and girls ages 7-14 may participate in recreation soccer. Belleville resident children who will be 7 by Dec. 31 and who will be no older than 14 on Dec. 31, 1993 are eligible. Nobody above 8th grade can play, and all returning players must re-apply.

Boys ages 8-10 can play touch football if they so choose. Belleville boys who will be 8 by Dec. 31 and who will be no older than 10 on Dec. 31, 1993 are eligible. All returning players must re-apply.

For both soccer and touch football, all completed applications must be returned to the Recreation Department, 407 Joralemon Street, with birth certificates. The registration deadline for soccer is Aug. 6 and the deadline for touch football will be Aug. 27. Children are advised not to register for more than one fall sport since football, soccer and touch football games and practice schedules conflict.

Those interested in coaching may call the Recreation Department at 450-3422 before 4 p.m.

Soccer coaches needed

The Belleville Recreation Department is seeking persons interested in coaching its seven-to-fourteen year old soccer league. The league is separated into several divisions according to specific age groups.

The children learn the basics of soccer and all those attending regular practices play in all games. Games are played on Saturdays and Sundays, beginning mid-September. All volunteer coaches will be required to attend a certification clinic by the NYSCA before the season begins.

Bengals win extra inning thriller at Marotti



Coach Wake gives speech to his players in between innings. Belleville responded with a solid defensive effort and a game come from behind attempt.

Salvanto homer seals game one

(continued from page 9)

the shortstop who threw wildly. The error allowed Ingraham to come around and score the fourth Bruins run.

Leading 4-1 in the sixth, the Bruins appeared to be in good shape. Crescent scored once with a solo homer in the sixth, but Mirabella retired the side in order after that.

It wouldn't be that easy in the seventh. Crescent scored three runs off Mirabella in the inning to take a 5-4 lead. Mirabella did a good job in getting out of further trouble and on a key run down play, Ingraham threw a strike to DeBiase at the plate to get an Eagles runner who was attempting to score the sixth run.

With the season about to end, the Bruins battled back. LaRose walked and DeBiase was hit by a pitch. Grady, called on to pinch hit, grounded to first base, moving the runners up one base.

With two outs and runners on second and third, Anthony Mielnicki grounded to the shortstop. The ball was momentarily bobbled and Mielnicki dove into first, beating the throw by a step. LaRose scored the tying run and the game went into extra innings.

Tremel retired the Eagles in order in the eighth and the Bruins finally won it in the last of that frame.

With two outs, Salvanto reached on an error by the shortstop. LaR-



The long throw to first base!

ose blasted a long double off the right field fence, putting runners on second and third. Ingraham, on a 2-2 count, hit a seeing eye single past the first baseman and in front of the rightfielder, to score Salvanto with the winning run.

Tremel was credited with the victory. He pitched the final inning and also hurled 1/3 of an inning in the fifth after Gallagher was removed from the game.

Gallagher pitched the first 4 1/3 innings and did an excellent job, allowing just one run. Mirabella came in with two outs in the fifth and the bases loaded. He got the next hitter to fly out, ending a threat and then pitched the sixth and

seventh innings.

NOTES: In the 7-5 loss to Crescent, Nardachone drove in two runs with a double.

Cranford advanced past West Orange in dramatic fashion. They won two games last Sunday and in both contests, Cranford prevailed with a three run homer in their final at bat.

Bruins had just six hits in the second game of the doubleheader last Sunday. Crescent pitcher struck out 11 Bruins in the second game.

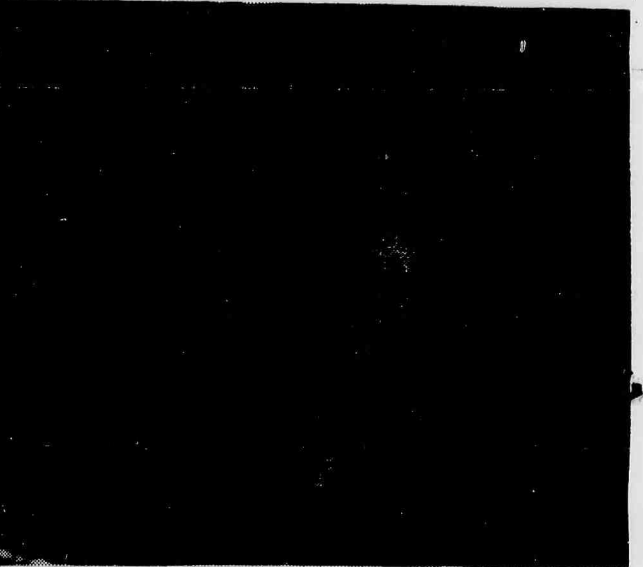
Bruins posted one victory against Verona this season and came close two other times.



A close play at second base. Belleville second baseman tags out Bloomfield runner attempting to steal.



Shortstop tags second and throws to first in an attempt to complete double play.



Belleville batter is jammed, but still fouls off pitch and stays alive during fifth inning.

AUTO LOANS!

No Credit?

Bad Credit?

WE FINANCE EVERYONE!

New & Used Cars & Trucks!

260 Available Now!

**CALL 1-800
CAR LOAN**

**DeMassi
PONTIAC**

IN LYNDBURST

LOU DeMASSI'S DISCOUNT CORNER SINCE 1937



939-6100

EVERY DAY LOW LEASE PRICES ALL MAKES & MODELS

★★★★★ FIVE STAR SERVICE EXCELLENCE AWARD WINNER

**SUMMER
RED HOT
'93 BUYS
SIZZLERS**



NEW 1993 GRAND AM GT
PONTIAC—6 cyl eng, auto trans, pwr/steer/brks/winds/abs, air cond, am/fm stereo case, rr def, tilt, cruise, Stk #9379. VIN #PCT90602. MSRP: \$16,778. Net amount to finance = \$13,128. 35 equal payments of \$199 with purchase option of \$7382 at end of term.

\$199 PER MO.



NEW 1993 GRAND PRIX SEDAN
PONTIAC—V6 eng, auto trans, pwr/steer/brks/winds/abs, air cond, rr def, tilt, cruise, Stk #P748. VIN #PF201894. Net amount to finance = \$13,352. 35 equal payments of \$243 with purchase option of \$6976 at end of term.

\$243 PER MO.



NEW 1993 BONNEVILLE
PONTIAC—6 cyl eng, auto trans, pwr/steer/brks/winds/abs, air cond, rr def, tilt, cruise, Stk #P848. VIN #P1278685. MSRP: \$20,853. Net amount to finance = \$16,601. 35 equal payments of \$273 with purchase option of \$8550 at end of term.

\$273 PER MO.

UP TO
\$1500
FACTORY
REBATES

AS LOW AS
3.9%
APR
FINANCING
IF QUALIFIED

SHOP
LOCALLY
AVOID THE
HIGHWAY
HASSLE!

LARGE
SELECTION
MANY
OTHERS
AVAILABLE

1988 TOYOTA PICKUP 4X4
4 cyl eng, auto trans, pwr/steer/brks, no air, am/fm case, tilt gls, 3" lift, 41,208 mi. VIN#J5096388.

\$7895

1988 PONTIAC FIREBIRD
V6 eng, auto trans, pwr/steer/brks/winds/abs, air cond, tilt, tilt gls. Stk #3543. 16,029 mi. VIN#K120802.

\$7995

1988 HONDA ACCORD DX
4 cyl eng, auto trans, pwr/steer/brks, air cond, am/fm case, tilt gls, cruise. Stk #3530. 34,635 mi. VIN#KAO16086.

\$9195

1990 FORD THUNDERBIRD
V8 eng, auto trans, pwr/steer/brks, air cond, am/fm case, tilt, cruise, tilt gls. Stk #3521. 28,264 mi. VIN#LH212290.

\$9495

1990 CADILLAC SEDAN DEVILLE
V8 eng, auto trans, pwr/steer/brks, air cond, am/fm case, cruise, tilt, vogue tree, thr int, full pwr. STK#3537. 45,477 mi. VIN#L348491.

\$15,795

1991 JEEP CHEROKEE 4WD
Laredo pkg, 6 cyl eng, auto trans, pwr/steer/brks/winds/abs, air cond, cruise, tilt. Stk #3502. 29,836 mi. VIN#ML631760.

\$16,995

**USED
CARS**

Price includes all costs to be paid by a consumer, except for licensing, registration & taxes. All above Smart Buys are for 35 months. \$2500 down or equal trade. 15,000 miles per year then 10 cents each mile thereafter. Also available: no money down Smart Buys. Ask for details.

**DeMassi
PONTIAC**

PARK AND RIVERSIDE AVENUE, LYNDBURST

YOUR LOCAL PONTIAC
DEALER FOR BIGGER
SAVINGS! • HOURS:
MON.-FRI. 9-9, SAT. TIL 5

Alfred Giannetta, 39

A Mass for Alfred J. Giannetta, 39, of Bloomfield was offered Aug. 9 in Immaculate Conception Church, Montclair, following the funeral from the La Monica Memorial Home, Bloomfield.

Mr. Giannetta died Aug. 4 in the University of Medicine and Dentistry of New Jersey, Newark, from injuries he sustained Aug. 3 in an automobile accident while driving on the Parkway in Cranford.

He was a freelance jazz musician, accomplished in keyboard,

piano and percussions. He performed with the Fred Giannetta Jazz Trio and other groups.

Mr. Giannetta was also an auto mechanic with Covino's, Belleville, and worked for Capalbo's Fruit Baskets of Nutley.

Born in Newark, he moved to Bloomfield 16 years ago.

Surviving are his wife, Marie; his mother, Mrs. Leona Alfieri; two brothers, Pat-Giannetta and Kenneth Alfieri; and a sister, Mrs. Kathleen Brooks.

William Kelly, 73

Services for William Kelly, 73, of Belleville were held Aug. 6 in the O'Boyle Funeral Home, Bloomfield.

Mr. Kelly died Aug. 2 in the Clara Maass Medical Center in Belleville.

He was fire prevention equipment installer for the Automatic Sprinkler Co. in Kenilworth for 10 years before his retirement seven years ago. Earlier, he had worked for Action Sprinkler Co. in Hawthorne for many years.

Mr. Kelly served in the Navy during World War II. He was a member of the New Jersey State and United States Golf Associations, and the Branch Brook Golf Club of Belleville.

Born in Newark, he lived in Bloomfield before moving to Belleville four years ago.

Surviving are his wife, Ann; a stepdaughter, Mrs. Jacquelyn Hartley; a brother, John, and a sister, Mrs. Ruth Pinto.

Obituaries

Mary Cancelliere, 70

A Mass for Mrs. Mary Cancelliere, 70, of Belleville was offered Aug. 9 in St. Lucy's Church, Newark. Arrangements were by the S.W. Brown & Son Funeral Home, Nutley.

Mrs. Cancelliere died Aug. 6 in West Hudson Hospital, Kearny.

She worked in the cafeteria at Essex Catholic High School in

Newark for 15 years before retiring eight years ago.

Surviving are her husband, Cosimo Sr.; a son, Cosimo Jr.; two brothers, Lawrence and Raymond Napolitano; four sisters, Mrs. Carmella Ilaria, Mrs. Edith Iannuzzi, Mrs. Eleanor Facchino and Angie Napolitano, and two grandchildren.

Anthony Cipriano, 82

A Mass for Anthony J. Cipriano, 82, of Belleville was offered Aug. 11 in St. Lucy's Church, Newark, after the funeral from the LaMonica Memorial Home, Bloomfield.

Mr. Cipriano died Aug. 7 in the Mountainside Hospital, Glen Ridge.

He had been an assembler for Puralator in Rahway for 40 years before retiring in 1973.

Born in Newark, he lived in Belleville for 20 years.

Surviving are his wife, Carmella; a daughter, Mrs. Veronica D'Agostino; a sister, Mrs. Antoinette Mottillo; a brother, Gerard, five grandchildren and one great-grandchild.

Gloria Stefanelli

A Mass for Mrs. Gloria Stefanelli of Nutley was offered Aug. 4 in St. Peter's Church, Belleville, after the funeral from the Kiernan Funeral Home, Belleville.

Mrs. Stefanelli died July 31 in the Clara Maass Medical Center, Belleville.

She had been a secretary with the Public Service Electric & Gas Co. in Newark before retiring 14 years ago.

Born in Newark, she lived most of her life in Belleville before moving to Nutley 12 years ago.

Carl Montano, 65

A Mass for Carl M. Montano, 65, of Bloomfield was offered Aug. 9 in St. Francis Xavier Church, Newark, after the funeral from the La Monica Memorial Home, Bloomfield.

Mr. Montano, who died Aug. 5 in the Clara Maass Medical Center, Belleville, was supervisor of central services at the Clara Maass Medical Center for 20 years before

retiring in 1990. Before that he was a government inspector at Hydromatics, East Orange.

He was an Army Air Corps veteran of World War II.

Born in New York City, Mr. Montano lived in Newark before moving to Bloomfield in 1943.

Surviving are his wife, Marie; a son, Benjamin and a sister, Mrs. Mildred Radice.

Duna Monica, 76

A Mass for Mrs. Duna Monica, 76, a lifelong resident of Belleville, was offered Aug. 10 in St. Anthony's Church, Belleville, after the funeral from the Zarro Funeral Home, Bloomfield.

Mrs. Monica, who died Aug. 6 in

her home, was a member of the Catholic Daughters of St. Anthony's Church, Belleville.

Surviving are her husband, Serafine; a son, Niles; a daughter, Mrs. Ann Borsella, and four grandchildren.

Hospitals, communities must work together for healthcare reform

By Carmen B. Alecci, CEO
West Hudson Hospital

For months we've all heard reports from Washington on the federal government's efforts to devise an affordable, workable solution to the double whammy of access to an ever more expensive healthcare system. Obviously, change is inevitable. What isn't so obvious is that all of us — care providers, insurers and the public — must work together to ensure our collective good health, and that effort must begin in our own neighborhoods.

Many Americans believe that the major result of reform will be to reduce the cost of treatment. However, the issue is much more complex than that. The true revolution involves redesigning the system to make healthcare providers more responsive to the needs of those who depend on them.

Rather than wait for mandates from Washington, however, efforts must be made much closer to home, and hospitals will play a major role in recreating the manner in which care is provided. As one of the most visible symbols of the healthcare profession, the community hospital is as much of a local landmark as the police station, the library or city hall. The key is to make hospitals more than just institutions, to transform them — and the professionals who work in them — into neighbors and trusted guardians of the community's health. From that foundation, hospitals can provide services which don't just help cure the ill, but promote wellness among their neighbors, as well.

To this end, the New Jersey Hospital Association Committee on Health Care Delivery System Reform is currently devising a plan for the state, based on the American Hospital Association's reform outline. The resulting "community care networks" will help provide ever-improving healthcare, based on the specific needs of the communities they serve. In effect, healthcare facilities will be encouraged to take an active role in bringing the public in, rather than waiting for the sick and injured to seek treatment.

Most hospitals were founded to benefit the towns they serve, and

they continue to address local needs with community-oriented outreach services, whether they be educational programs or volunteer efforts by their staff members. This activity must be further enhanced. Through the community care concept, hospitals will increasingly work in cooperation with a host of community organizations to make their service efforts an integral part of what they do, with the renewed purpose of encouraging wellness.

Many organizations already work together preventing diseases and combating situations which affect health, like homelessness, poor nutrition, violence and misinformation. By combining resources in partnership with hospitals, such social service groups can help provide a powerful means of preventing health problems before they happen. Likewise, police departments can offer the healthcare community the expertise needed to help curtail the incidence of drunk driving accidents and drug dependency. Through such programs, the entire community becomes an extended healthcare network, a "hospital without walls." The key is education, and through their resources, hospitals are the crucial link in this effort.

This way, the full resources of the community are used to work toward making sure people stay healthy. Clearly, it's more cost effective, for instance, to educate young people on the dangers of drinking and driving than it is to treat even one accident victim. Physicians, social service agencies, teachers and civic groups can all work in partnership to curtail alcohol use and drunk driving among a community's teens.

Community efforts have another benefit, in that they create a partnership between the hospital and the people it serves. Hospitals become places of learning and communication for people of all ages, and communities get the power to steer healthcare services to what they need, instead of what government decrees.

Keeping this partnership in mind, hospitals must start cooperating with each other to minimize duplication of services and equipment within communities. Like the businesses they have been forced to become, healthcare facilities are accustomed to competing with each other. By sharing strengths, however, hospitals and those they serve will benefit and grow.

Hospitals are coming to realize that it's no longer effective to sit in a building and wait for the patients to come. To provide the best, most cost-efficient care, healthcare providers must reach out to determine the community's needs and supply the necessary information and care. Likewise, individual citizens and groups must make their healthcare priorities more widely known.

About the author: Carmen Alecci has been serving as Chief Executive Officer of the West Hudson Hospital since 1989. Alecci is a member of the American Hospital Association and Chairman of the New Jersey Hospital Association Committee on Health Care Delivery System Reform.

KICKOFF CLASSIC XI #1 FLORIDA STATE vs KANSAS

Sat. August 28
Noon

Giants Stadium

Don't miss the chance to see
the No. 1 team in the country at
the Kickoff Classic!

Tickets on sale now!

Tickets are \$28* and are available at Meadowlands Arena Box Office
Ticket Information (201) 935-3900. Group Sales (201) 460-4370.
American Express Gold & Platinum Card members call 212-307-GOLD for preferred seating thru Gold Card Events.

TICKETMASTER
TOWER RECORDS/VIDEO • HAV
SOUND-B-RAMA • JAZZ MUSIC WORLD
BLOOMINGDALE'S 19th Street
(212) 307-7171 (914) 454-3388
(201) 507-9900 (516) 882-9000
(609) 520-8383

*Plus applicable Ticketmaster Service Charge
The maximum resale premium in accordance with the NJ State
law is 20% of the ticket price, or \$3.00, whichever is greater.

Helmen Trophy
Candidate Charlie Ward,
QB Florida State

SPORTS
Hudson County
SPORTS



**Pharmacy
Footnotes**



Vincent
Cozzarelli
Reg. Ph.

CAN YOU SEE THIS?

The ready-to-wear reading glasses found on spin-around displays in the pharmacy may help save the cost of a pair of prescription glasses. Drugstore glasses are intended for those who reach middle age and find that it is becoming increasingly difficult to read newspaper type and small print. In most cases, those symptoms are indications of the development of presbyopia, or "aging eyes." This inevitable form of farsightedness occurs as the eye's lens loses its elasticity. The reading glasses found in the pharmacy consist of magnifying lenses that help bring newspaper back into focus. They will not correct blurred vision caused by conditions other than presbyopia. Available in several optical powers, they are worth trying on to judge their ability to help middle-aged eyes.

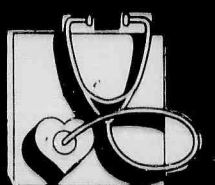
We're available to answer your questions and provide you with complete service at ROSSMORE PHARMACY, 338 Washington Ave., 759-1968, 759-1956. We are Medicare and Blue Cross approved. Crutches, canes, walkers wheel chairs and other convalescent aids are rented and sold. "Your doctor knows Us-Your Doctor Trusts Us." Open: Daily 9am-10pm, Sunday's 9am-5pm.

HINT: Only prescription glasses can deliver a different lens power for each eye for those who need them.



PROFESSIONALLY SPEAKING

• The Nutley Sun • Belleville Times • Bloomfield Life



Chiropractors

**DR. RALPH J.
DI MAIO**

CHIROPRACTOR

Serving your community
for over 13 years

Most insurances provide coverage

751-8805

625 Jorammon St. Belleville

CHRISTIAN B. HELM, D.C.
Chiropractic Physician

Diplomate National
Board of
Chiropractic
Examiners

Specializing in
the treatment
and care of low
back conditions

199 Broad St. Suite 1 C
Bloomfield 748-1601

Obstetrics/Gynecology

Gerard Cicalese, M.D., P.A.
Joseph Parlavecchio, M.D.

Announce The Opening
Of Their Second Office

Located at:

382 W. Passaic Ave., Bloomfield, NJ

Evening Hours By Appointment Only

330 Washington Ave., Belleville • 751-4300

Dentists

Dial "NO-PAINO"
(667-2466)

Cosmetic &
Restorative
Dentistry

Smile Today

J.D. Muglia D.D.S., P.A. F.A.C.D.

10 Franklin Ave.
Nutley, N.J.

24 Hr. Emergency
Service

Internists

Deborah Pecora Schnurr, M.D.

GENERAL MEDICAL CARE

☐ DIABETES ☐ GYNECOLOGICAL TESTING
☐ INFECTIONS ☐ COMPREHENSIVE PHYSICALS
☐ CARE FOR THE ELDERLY ☐ WEIGHT REDUCTION PROGRAMS
☐ HIGH BLOOD PRESSURE ☐ EKG, BLOOD, AND URINE TESTING

Office Hours Monday through Saturday by Appointment
Evening hours available and new patients are welcome
Most Major Medical Insurances Accepted
Medicare Accepted

187 Chestnut St., Nutley
(201) 667-4402

**TO
ADVERTISE
CALL**

667-2100

TO ADVERTISE YOUR BUSINESS HERE CALL 667-2700

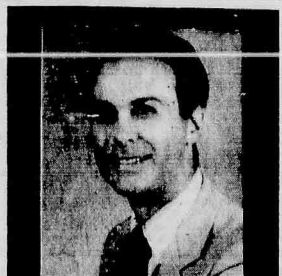
COZZARELLI

MEMORIAL TRUST

Established 1885

IN YOUR TIME OF NEED

"A Family Name You Can Trust!"



James J. Cozzarelli
Owner/Manager

**276 Washington Ave.
Belleville, NJ**

759-1114

We the family of Thomas J. Triano wish to express our sincere appreciation to all our relatives, friends, co-workers, neighbors and customers for the kindness and sympathy extended to us in the recent death of our husband, son and brother.

We especially wish to thank St. Stephens Church, Kearny Local P.B.A. 21, The Belleville Fire Dept., West Hudson Hospital, Dr. Lippman and staff, Hospice Inc., Erin Packard, Maria Vercchio, The Edward T. Ried Funeral Home, staff and pallbearers, and all who attended the funeral, sent flowers, mass cards and cards of sympathy.

Sincerely,
Sharon Triano & Family

SHARE provides Food and Volunteers

By Juliana Walsh

Reverend Carl Shelton was in Calcutta when he asked Mother Theresa if there was any way he could help her. She replied, "Go back to your country and feed your people."

So in 1983 Rev. Shelton set up the Self-Help And Resource Exchange program in San Diego as a way to feed the community while involving its members in service activities.

Since then the program has moved east and is now an inexpensive way for any and all New Jersey residents to buy food.

"This is not a handout. We are not giving away food," said Janette Carroll, Executive Director of New Jersey's SHARE program.

The \$13 individual SHARE food packages contain fresh fruits and

vegetables, frozen meat and poultry, plus grain and staple items. The participants, who can pay with cash or food stamps, also agree to perform two hours of self directed service in their community in exchange for the top quality food worth \$30 to \$35, Carroll said.

In exchange for the food, people can volunteer at local SHARE centers, the Red Cross, churches or in hospitals.

"Some act of kindness. Anything that can improve the quality of life," said Carroll.

Locally, there are two SHARE Centers on Washington Avenue in Belleville accepting orders for this month's food package up through Aug. 16: the Christian Faith Center, 393 Washington Avenue, 450-0848; and St. Peter's Roman

Catholic Church, 10 Washington Avenue, 759-3598.

There are no income requirements to be a SHARE participant and individuals can order one or many packages.

"There is no scarcity of food but there is still hunger," Carroll said.

The state wide, not-for-profit supplemental organization is set up in 300 locations throughout all 21 counties in New Jersey. This is no small operation, it provides food packages to 50,000 individuals in NJ each month.

Area residents can order packages for this month at either of the above two addresses in Belleville. Recipients pick up the prepaid orders at the end of the month.

The New Jersey program began in Newark in Sept. of 1985 and since

then it has served residents for 96 consecutive months.

"I don't care how rich or poor you are, as long as you are willing to put in the two hours community time," said Dorothy Stera, who heads SHARE out of St. Peter's Church.

In her group, some volunteer helping elderly neighbors with shopping or driving while others help organize the SHARE operation.

Stera said in an average month, her group packages 40 to 50 SHARE units, although that slows down in the summer months.

Resident named to Dean's List

Nicholas Juliano has been named to the Dean's List at the Rutherford Campus of Fairleigh Dickinson University for the 1993 Spring Semester.

Students named to the Dean's List must maintain at least a 3.2 GPA.

NOTICE TO ABSENT DEFENDANTS (L.S.) STATE OF NEW JERSEY TO WADIS PHILLIPS, your heirs, devisees and personal representatives and your, their and any of their successors in right, title or interest,

AND MRS. WADIS PHILLIPS, wife of Wadis Phillips, your heirs, devisees and personal representatives and your, their and any of their successors in right, title or interest,

YOU ARE HEREBY SUMMONED AND REQUIRED to serve upon FEDERMAN AND PHELAN, P.C., plaintiff's attorney whose address is Suite 505, Sentry Office Plaza, 216 Haddon Avenue, Westmont, New Jersey 08108, an answer to the Complaint, Amendment, Second Amendment and Third Amendment to Complaint, filed in a civil action, in which Fleet Real Estate Funding Corp. is plaintiff and Wadis Phillips, et als. are defendants pending in the Superior Court of New Jersey, Chancery Division, Essex County and bearing Docket No. F-18491-92, within thirty-five (35) days after August 12, 1993 exclusive of such date. If you fail to do so, judgment by default may be rendered against you for the relief demanded in the Complaint, Amendment, Second Amendment and Third Amendment to Complaint. You shall file your answer and proof of service in duplicate with the Clerk of the Superior Court of New Jersey, Hughes, Justice Complex, CN-971, 24 Market Street, Trenton, New Jersey 08625, in accordance with the rules of civil practice and procedure.

This action has been instituted for the purpose of (1) foreclosing a mortgage dated October 20, 1987 made by Wadis Phillips, as mortgagor given to County Mortgage Co., Inc., and recorded on November 19, 1987 in Book 5510 of Mortgages for Essex County at Page 431, which mortgage was assigned on October 20, 1987 to Norstar Mortgage Corporation, and recorded on November 19, 1987 in Book 597 of Assignments, said county at Page 607. Norstar Mortgage Corporation is now known as Fleet Real Estate Funding Corp.; and (2) to recover possession of, and concerns premises commonly known as 194 Vassar Avenue, Newark, New Jersey 07112.

If you are unable to obtain an attorney you may communicate with the New Jersey State Bar Association by calling 800-852-0127. You may also contact the Lawyer Referral Service of the County of venue by calling 201-662-6207. If you cannot afford an attorney, you may communicate with the Legal Services office of the county of venue by calling 609-672-6050.

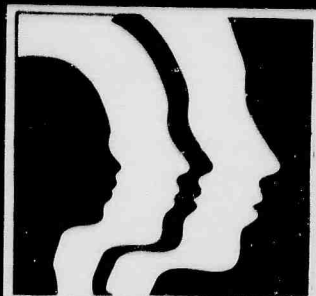
YOU, Wadis Phillips, your heirs, devisees and personal representatives, and your, their or any of your successors in right, title or interest are named as a party defendant to this foreclosure action because you executed the bond and mortgage being foreclosed herein and may be liable for any deficiency thereon and for any lien, claim, title or interest you may have in, to or on the mortgaged premises because you are the record owner of the mortgaged premises, it not being known whether or not Wadis Phillips is still living.

YOU, Mrs. Wadis Phillips, wife of Wadis Phillips, your heirs, devisees and personal representatives, and your, their or any of your successors in right title or interest are joined as a party defendant herein for any lien, claim, title or interest you may have in, to or on the mortgaged premises because you are the wife of Wadis Phillips, it not being known whether or not Mrs. Wadis Phillips is still living.

DONALD F. PHELAN,
Acting Clerk
Superior Court of New Jersey

Belleville Times
Aug. 12, 1993
Fee: \$41.36

No. B93-415



The right people

TO DO BUSINESS WITH! BUSINESS CARD DIRECTORY

KINDLY CLIP AND SAVE THESE CARDS FOR FUTURE REFERENCE

Advanced Recovery Recycling

Announcing... 450-9797
CASH FOR:

- Aluminum
- Aluminum Cans
- Copper
- Circuit Boards
- Catalytic Converters
- Car Parts
- Stainless Steel
- Car Batteries
- Alternators
- Brass
- Lead
- Nickel
- Unburned Wire
- Light Hauling
- Furnace & Boiler Removals
- Appliance Removal

We also buy and sell Used Computer Equipment

ALUMINUM RECYCLING INC. • 3 Montgomery St. • Belleville, NJ

CHARMING LADY

Beauty Salon

144 Chestnut St.

Nutley

Complete Care and Coloring
Specializing in Perms and Cuts
to suit your special look

667-2133 appt. only

Laura Laino

BILL'S GUTTER SERVICE

- Gutters & Leaders Cleaned and Flushed
- Repairs and Installation
- Quality Screening • Tree Trimming

CALL
338-0448

ALL WORK GUARANTEED

J.P. Clarke

Heating

Air Conditioning

Sales • Service • Installation

Nutley, N.J.

(201)284-1343

J. Coppola & Sons, Inc.

EST. 1942 48 Yrs. Exp.

Aluminum and Vinyl Siding
Roofs / Doors / Additions
Repairs / Windows / Gutters

429-9266

FULLY INSURED

BARBARA A. THOMPSON, M.A.

Counselor

Addictions • Personal Growth
Relationships • Self-Esteem
Individual • Family • Group

(201)680-8009

By Appointment

SHOCKED BY HIGH WINDOW PRICES?

Don't buy ANY replacement windows until you get my price!
Deal direct with owner. No salesman's commission. NO pressure. NO gimmicks.
Additional \$25.00 OFF WINTER SALE on every window & door.
\$100 OFF on Every Window and Door.
TOP QUALITY hermetically sealed vinyl windows in over 100,000 N.J. installations. Free estimates. Life time guarantee. Low prices. EXPERT one-day No mess installations. Custom built to size.

TRUE THERMAL WINDOW CO., INC.

BILL KEARNEY

201-763-7672 or 1-800-696-2061

Fully Insured

Licensed

Sincerely Yours

FRUIT BASKETS & GIFT CENTER

397 Centre St., Nutley • 235-0345

WIDE VARIETY GIFT BASKETS FOR ALL OCCASIONS

Fantastic gift items such as

- Vases • Balloons • Collectibles • Silk Flowers
- Plush Animals • N.J. Lottery

WE WILL HONOR OTHER COMPETITORS COUPONS!

WE DELIVER LOCALLY & SHIP NATIONWIDE



201-773-0078

Armando Auto Body

Body and Fender Repair - Collision Work

INSURANCE ESTIMATES

TOWING SERVICE

801-803 Main Avenue, Passaic, NJ 07055

ADDED TOUCH LANDSCAPING INC.

Complete Landscaping Services
& Lawn Maintenance

SUMMER SPECIAL!

FREE SUMMER FERTILIZER

with every new lawn maintenance account.

"Look for our ad in The Service Directory"

Free Estimates 751-0090 Fully Insured

201-748-4931

Daniel Steven

Full Service Hair, Nail & Tanning Salon
Men & Women

Jill

12 First Avenue

Bloomfield, NJ 07003

I.B.M. • ROYAL • SMITH CORONA • ADLER

MILLER & WALSH TYPEWRITER CO., INC.

DISTRIBUTORS OF ROYAL PRODUCTS

ELECTRONICS, CALCULATORS & TYPEWRITERS

Sales • Service • Supplies • Rentals • Laminating

GEORGE SANTORA

(201)743-9150

FAX: (201)743-4778

71 E. PASSAIC AVE.

BLOOMFIELD, N.J. 07003

ABC

Wildlife Removal Co.

Specialists in Humane Wildlife Removal!

Chimney Caps

- Birds
- Raccoons
- Skunks
- Squirrels, etc.

RESIDENTIAL-COMMERCIAL-INDUSTRIAL

EMERGENCY SERVICE • FULLY INSURED

REASONABLE RATES

748-1259

REPAIRS • PREVENTIVES ARRANGED

RACIOPPI'S TARALLES

169 Bloomfield Ave. Bloomfield

We carry a full line of taralles

- Regular • Garlic • Hot • Pizza

* SPECIAL ORDERS *

680-0081

(201)680-8989

Fully Insured
NJ Certified Applicators

ABC Pest Management, Inc.

Residential • Commercial • Industrial

NJ Commercial Pesticide
Applicator Business No. 94885

J. DAVIS CLEAN-UP SERVICE

Basements, Attics, Garages,
All types of rubbish removed

* LOW RATES - FREE ESTIMATE *

736-1605

THE hair Company

Expert Hair Colorist

Call: Gail Montesono

667-9000

ESSEX COUNTY

PAINTING & WALLPAPERING

- * We "Specialize" in Sponge Painting *
- * Popcorn Ceilings *

FREE ESTIMATES

Angelo - 748-4938

BEDROCK STONE RECYCLING

411 Bergen Ave., Kearny

997-0220

THIS SPACE CAN BE YOURS

For Only \$25.00 Per Month

CALL 667-3000

CALL: 667-3000 TO HAVE YOUR BUSINESS CARD INCLUDED EACH MONTH

COUPON SPECIAL CAR WASH

\$6.00 + Tax

For Full Service

Exterior \$5.25 + Tax

(with This Coupon)

Expires 8/31/93

FRANKIE'S FUTURMATIC BRUSHLESS CAR WASH

305 Broad St. • Bloomfield

748-2450

Open Mon. - Sat. 8-6
& Sun. 8-3

180 Centre St.

Nutley, N.J. 07110

667-3440

GEORGE E. MACMUNN CO.

REALTORS

100 Woodport Road

Sparta, N.J. 07871

729-8727

BLOOMFIELD-BROOKDALE

Beautiful tree lined street, center hall, Frpl. in LR, formal DR, lg. eat-in-kit, Fam. Rm. on 1st, 3 big BR's, 2 car att. garage, good size lot, central air. Estate sale. **ASKING \$189,900.**



GREAT NEIGHBORHOOD

Comfortable family home with Frpl. in LR, mod eat-in kit, formal DR, 3 nice BR's, 1 1/2 baths, 21x13 Fam. Rm. & covered rear patio complete the picture. **ASKING \$154,900**

DO YOU KNOW WHAT YOUR HOUSE IS WORTH TODAY?

We offer a current market
value analysis...
Just pick up the phone & call.



NUTLEY

Five years young, half a duplex, great opportunity 2 big BR's, LR, DR, Mod kit, 1 1/2 baths, 1 car att. garage, C/A, 22x17 Fam. Rm. **ASKING \$159,900.**



LAKE MOHAWK-SPARTA-ASKING LOW \$120,00's

Best Buy in Town!! LR w/stone Frpl, formal DR, eat-in kit, rear deck, covered side porch, 1/2 blk to beach, nice views, 2 big BR's (both 19x12), new furnace, roof & elec., low taxes.

Add Color To Kitchen With Vinyl Flooring

In the past, designers, decorators and retailers have recommended kitchen flooring that was often neutral, devoid of any pattern and could be used as a backdrop for a splashy countertop or wallcovering. Today, however, kitchen floors are taking center stage with bold new colors for sheet vinyl in contemporary new designs.

Jim Riley, Director of Color and Design for Tarkett, the Parsippany, NJ-based sheet vinyl and tile manufacturer, says that consumers are not just adding color randomly. "We see definite color preferences for the kitchen. Today's consumers are looking to replace the bland look of the '80s with crisp color contrasts or jewel tones on pale backgrounds."

Tarkett is right in step with satisfying the growing demand for color. "Approximately 65 percent of our product line is less than two years old.

Our continuing effort to update and provide color has kept Tarkett sheet vinyl and tiles light years ahead of our competitors," according to Riley.

The manufacturer's latest sheet vinyl introductions reflect the company's ability to spot a trend before everyone else. For example, New Image®, in the Lifetime Brite® line, uses an artistic brushstroke of color against a soft pale background. The teal colored brushstroke satisfies consumers' need to add color while adding sparkle and vibrancy to the room.

For consumers who are serious about making their kitchen floor the centerpiece of their decorating scheme, Riley recommends the Lifetime Brite Tiffany® pattern reminiscent of actual Tiffany stained glass windows. This new pattern randomly features 9 inch mosaic rose bouquets in a variety of colors including blue, beige, coral and charcoal for example.

If ornament is in order, consider Tarkett's Knightsbridge® pattern from the Style Brite® line. Knightsbridge is a multi-colored combination of charcoal, dark mauve, khaki and teal and is a sure way to add color affordably.

For consumers who favor a kitchen with contrasting color, Riley offers the Alpine Terrace® pattern from the Brite Choice™ collection. The diamond inset in black on a white field can add contemporary elegance while adding a colorful focal point to the room.

The use of color in kitchen flooring certainly reflects a new decorating trend but it also solves a common problem that has been facing consumers with all-white kitchen for years. "People are tired of keeping bright white floors clean especially since there is less time for household chores," says Riley. "Adding color to a kitchen with Tarkett flooring updates the decor with little effort and the floors of the '90s are easier to keep clean with a minimum amount of maintenance."

For the name of a Tarkett retailer near you call 1 800 FOR TARKETT.

ADVERTISE IN Your Hometown Newspapers

The Nutley Sun
Belleville Times
Bloomfield Life

DON'T MISS OUT
SPACE IS LIMITED

CALL 667-2100

ADVERTISE!

DE PIRO REALTORS

366 Passaic Ave., Nutley

667-0006



NUTLEY - EXCELLENT LOCATION - Offers 3 bedrooms, large living room, dining room, kitchen. Owner eager to preview all offers. Priced at \$159,000. Call Realtor 667-0006



NUTLEY - OLD WORLD CHARM - Charming Center Hall Colonial w/beautiful stained glass spacious rooms. Great family neighborhood, deep sunny yard. Unbelievable \$199,900. Call 667-0006



BELLEVILLE - 83 JEFFERSON STREET - Super clean in/out. Look for the greenest lawn on the block! This well kept home deserves immediate attention. Priced at only \$139,900. Call Realtor 226-5510.



BELLEVILLE - REDUCED \$169,900 - Spacious Colonial in top notch area. Stone facade - 3 BR, 2 Bath with finished basement, fireplace, prof. landscaped. Sellers super motivated! Make Offer! Call 667-0006.



BLOOMFIELD - WALK TO BROOKDALE PARK - Charming 2 Bedroom Tudor in lovely family neighborhood. Call Realtor 667-0006.



BELLEVILLE - YOU MAY QUALIFY TO BUY! Why pay rent when you can settle in this spacious 2 bedroom Condo with garage for only \$82,500. Need only 1 bedroom? Call to preview an updated Condo priced at \$63,900. Call Realtor 226-5510.

IMAGINE!!!

OVER 100 HOMES FOR SALE

in Nutley thru multiple listing.
Many more in the surrounding towns.

CALL US
FOR A LIST OF HOMES IN YOUR PRICE RANGE

May we help you without obligation.
For buyers - to know your price range.
For owners - to know the market value of your home.

EVERYONE KNOWS

GEORGE T. BOWES

YOUR NUTLEY REALTOR SINCE 1933
681 FRANKLIN AVE. NUTLEY 667-3376

United Artists
Channel 20

OBC-TV

OUR BEST CHOICE

Suburban Cable
Channel 36

Meet Your Mayor

The hottest shows on TV today are those with news, talk and information, and OBC-TV 2036 has all of that — and more. We have Lee Spinelli, who talks about the issues, gets to the heart of the matter, and her guests love it.

On this edition of Meet Your Mayor, Lee Spinelli joined Mayor Philip Toronto on a walking tour of Lodi. He brought her to the areas of Lodi that are in the works for reconstruction or repair in his

Downtown Project. These locations include Main Street and the Route 46 intersection, the river area, and Dellglen Avenue.

Join Lee Spinelli in this special edition of Meet Your Mayor, where Mayor Toronto shows us step by step his plans for the Downtown Project. Tune in to OBC-TV, Channel 36, Suburban Cable and Channel 20, TCI of North Jersey on: Aug. 12 at 7 p.m.; Aug. 15 at noon.

Front Page Edition

One of the hottest shows on TV today is on cable. If you enjoy news, talk and information, then watch Front Page Edition with Lee Spinelli, three times a week on OBC-TV 2036.

This week, Lee takes us on a walking tour of Bloomfield Center. She visits every type of store Bloomfield has to offer. Lee even stops to take us for lunch during her busy tour.

Some of the stops along the tour include: Lou Rocco Shoes, Keran's Men's Store, Burgess Chem-

ist, Robin Hood Car Wash, and Wonder Health and Barbell. Also included in the show will be interviews with Bob Davies, President of Bloomfield Chamber of Commerce; and John Kerian and Lou Rocco, of the Bloomfield Merchants Association.

Join Lee Spinelli to learn more about what Bloomfield Center has to offer on OBC-TV, Channel 36, Suburban Cable and Channel 20, TCI of North Jersey on: Aug. 13 at 8 p.m.; Aug. 14 at 10:30 a.m.; Aug. 16 at 8 p.m.

THURSDAY 81293

5:30 p.m. - Wrestling Tracks
U.S.A.-Wrestling News
6:00 p.m. - The Theresa Nance Show-News of Concern to Area Viewers
6:30 p.m. - The 11th 12 Hour
7:00 p.m. - Meet Your Mayor Lodi Downtown Project
7:30 p.m. - Mrs. Johnson, Parapsychology Talk Show Live
8:00 p.m. - Film Flicks & Video Pix-Reviews of Films & Videos
8:30 p.m. - Middle Eastern TV-Programming for the Middle Eastern Viewers
10:00 p.m. - The Uncle Floyd Show-Zany Comedy with Uncle Floyd
10:30 p.m. - Jersey Spotlight-The Hottest Acappella Groups with host Tommy Petillo
11:00 p.m. - Video Spotlight
FRIDAY 81393
5:00 p.m. - Astrology Today (Repeat of Tuesday's Show)
6:00 p.m. - Sudzin Country Videos
7:00 p.m. - Film Flicks & Video Pix
7:30 p.m. - Scholastic Sports

8:00 p.m. - Front Page Edition: Bloomfield Center Special
8:30 p.m. - Rock Reel
9:00 p.m. - Special
9:30 p.m. - Wrestling Tracks U.S.A.
10:00 p.m. - The Uncle Floyd Show
10:30 p.m. - Look & Live Ministry
SATURDAY 81493
10:30 a.m. - Front Page Edition: Bloomfield Center Special
11:00 a.m. - The Theresa Nance Show
11:30 a.m. - Sports & Entertainment Show with Kamillah Tajiddin
12:00 noon - Rock Reel
12:30 p.m. - America's Backyard-Home Fix-It & Gardening Tips
6:30 p.m. - The Mark Dacey Show-Interviews & Acoustic Performances by the Area's Musicians
7:00 p.m. - Jersey Spotlight
10:00 p.m. - The Uncle Floyd Show
11:00 p.m. - The 11th Hour Comedy Show

SUNDAY 81593

8:00 a.m. - Look & Live Ministry
11:30 a.m. - Health Issues-Interviews with Area Health Professionals: Podiatry
12 noon - Meet Your Mayor: Lodi Downtown Project
12:30 p.m. - America's Backyard
6:00 p.m. - Sports & Entertainment Show with Kamillah Tajiddin
6:30 p.m. - Jersey Spotlight
7:00 p.m. - Special
7:30 p.m. - Italics
8:00 p.m. - Mondo Italiano-Italian & Italian American Entertainment
MONDAY 81693
7:00 p.m. - The Mark Dacey Show
7:30 p.m. - Wrestling Tracks U.S.A.
8:00 p.m. - Front Page Edition: Bloomfield Center Special
8:30 p.m. - Health Issues: Podiatry
9:00 p.m. - Mrs. Johnson, Parapsychology Talk Show (repeat of Thursday show)
9:30 p.m. - Film Flicks &

Video Pix

10:00 p.m. - The Uncle Floyd Show
TUESDAY 81793
6:30 p.m. - The 11th 12 Hour
7:30 p.m. - Power Play County
8:30 p.m. - Sports & Entertainment Show with Kamillah Tajiddin
9:00 p.m. - Astrology Today hosted by Steven Joseph Sinopoli. Live Call-In
10:00 p.m. - The Uncle Floyd Show
10:30 p.m. - Look & Live Ministry
WEDNESDAY 81893
7:00 p.m. - The Mark Dacey Show
7:30 p.m. - Special
8:00 p.m. - Mondo Italiano
9:00 p.m. - Power Play County
10:00 p.m. - The Uncle Floyd Show
10:30 p.m. - The 11th 12 Hour
11:00 p.m. - Meadowlands Showcase
11:30 p.m. - Sports & Entertainment Show with Kamillah Tajiddin

HOURS:
Monday - Friday
9:00am-5:00pm

CALL:
667-3000

THE CLASSIFIEDS:

A World Of Opportunity In A Nutshell!



All Classified Ads appear automatically in all three of our papers: The Nutley Sun, Belleville Times, Bloomfield Life.

Transient Ads-Paid In Advance

First 4 lines..... \$16.91
Each Additional Line .. \$1.52
Borders Are Available
For a Fee of \$5.00
Contract Rates Available



Check your Ad the first day of publication

CREDITS:
Credits & adjustments are to be made only for errors which significantly alter the effectiveness of the ad, such as a wrong telephone number or price. Credits will not be issued for typographical errors or misspelled words. The newspapers can assume responsibility only for MAJOR errors in the first day's publication.

Classified Deadline Tuesday 12 Noon

Name _____
Address _____
Phone _____
Category _____
☐ Border \$5.00 Additional
Run Date _____ Number of Insertions _____
☐ Check _____ Visa M/C No. _____

PARTS ACCESSORIES SERVICES

ATTENTION! AUTO PARTS

WILL PAY CASH FOR ANY JUNK CAR IN ANY CONDITION

Highest prices paid for late models

USED CARS & TRUCKS

991-4246 or 991-0081

USED PARTS 54 Stover Ave. Kearny USED PARTS

AUTO SALES

1981 Pontiac
2nd owner hatch back
\$68,000 mls. Excl cond.
\$595. Call after 6pm
661-0821

1985 Ford Bronco
Blue 351 motor. Captains
seats, good tires. Good
condition. \$4200 or best
offer. 908-283-0753

1990
Plymouth Laser
Black, new tires, new
brakes, alarm system,
AM/FM radio 60,000
highway miles. Good
condition. \$6500. or
best offer!
Call Rene at:
239-4417

1991 FORD EXPLORER
XLT 4X4. Auto, P/S, P/B,
A/C, luxury wheels, fully
loaded, 38,000 miles.
Excellent condition.
See & make offer!
Call 201-575-8037

FREE REMOVAL OF JUNK CARS
24 HR SERV
CALL TWIN TOWING
751-8430

AUTO WRECKERS

JUNK CARS WANTED
*Free Tow-Away
*Same Day Pick-Up
(In Most Cases)
S.O.S. TOWING, INC
429-8471 Bloomfield
481-2610 Newark

PERSONAL NOTICES

ADOPTION:
"ACTIVE AND INVOLVED, caring and considerate" describes us. Photographer dad and devoted mom enjoy sports, the beach, friends and family. We're ready to love and nurture a baby. LET US HELP YOU!
Mary and Greg
1-800-264-8677.

CZECH BOY, 17,
anxiously awaiting host family. Enjoys sports, reading. Other Scandinavian, European high school students arriving August. Call Kathleen (908) 389-3346 or 1-800-SIBLING.

PERSONAL NOTICES

DIVORCE KIT DO IT YOURSELF
M/F, 9am-5pm
(908) 782-5540

FREE POETRY CONTEST
Win \$20,000 in cash prizes annually! Possible publication. Beginners welcome. Send 1 poem 21 lines or less.
Box 949,
Lawndale CA 90260

PRAYER TO THE BLESSED VIRGIN
(Never known to fail) O Most beautiful flower of Carmel, fruitful vine, slendor of heaven. Blessed Mother of the Son of God, Immaculate Virgin, assist me in my necessity, O star of the sea, help and show me herein you are my Mother, O Holy Mary, Mother of God, Queen of Heaven and Earth. I humbly beseech you from the bottom of my heart to succor me on my necessity (make request). There are none that can withstand your power. O Mary conceived without sin, pray for us who have recourse to thee (3 times) Holy Mary, I place this cause in Your hands (3 times). Say this prayer for 3 consecutive days. You must publish it & will be granted to you. N.N.

PRAYER TO ST. JUDE
May the sacred heart of Jesus be adored, glorified, loved and preserved throughout the world now and forever. Our sacred heart of Jesus, pray for us. St. Jude, worker of miracles, pray for us. St. Jude, helper of the hopeless, pray for us. Say this prayer nine times a day for nine days. By the eighth day your favor will be granted. It has never been known to fail. Publication must be promised. Thank you St. Jude for favors granted. A.K.

CHILD CARE

BABYSITTER-wntd for 18 mo. boy & 4 yr old hndcpdd brthr aft schl in my home. Hrs: Mon 9am-6pm. Pref own trans. Start 9/13. 509-9584.

CHILDCARE: AuPair-Care cultural exchange. Experienced legal European aupairs. Affordable live-in childcare, government-approved, local counselors. Call N.J. regional office, Pat Popplitt, 516-696-6176 or 1-800-4-AUPAIR.

SPACE AVAILABLE CALL:

If you are looking for someone to provide a warm & loving envmt for your child, look no further. I have lots of exp & refs. Your child will have a safe playroom & planned activities. Call 759-2724.

Mature person needed to help get children off to school starting Sept. 7:20 am to 8:20 am. 667-3861.

NANNY D'S INFANT CARE CENTER
Full Day Sessions
6 weeks to 2 Yrs. Old
204 Washington Avenue
Belleville 759-1524
Director: Dolores Arlt

Reliable person (student ok) to care for children, 9, 11, & 13, in my home, M-F, 3:30-5:30. Refs a must. 667-1251 after 5pm.

BABY SITTING SERVICES

Reliable School #5 mother will watch children 3 to 7pm. Snack, homework time provided. Exc. ref. Call 751-7145

Warm & Loving
mom with plenty of experience & TLC will watch your child in her Bloomfield home. Lunch provided! Flexible hours. References available.
Call Donna anytime at:
743-7734

EMPLOYMENT WANTED

College grad. (1987) entering FDU's accel. BSN program in Fall seeks P/T clerical duties in medical arena. Need flex. sche. & will do light typing, etc. at home. Debbie 751-1431 aft. 3pm

GENERAL OPPORS.

\$\$\$LOANS\$\$\$
NO CREDIT CHECK
Employed?
Call Now
For Approval!
1-800-889-7871

INSTRUCTION

This Program Won't Just Open Doors. It'll Knock Down Walls.

Entree is a Gibb's program for people who want to make some noise in the business world. Entree is a THREE TO SIX MONTH business skills course offered during the day or evening. This program is perfect for those looking to get the skills and training necessary to make an IMMEDIATE IMPACT.

Courses start soon, so call or send in the coupon today. Financial aid available to qualified applicants.

Montclair (201) 744-6967

Gibbs

The Shortest Distance Between You & Success
33 Plymouth Street, Montclair, NJ 07042

Name _____ Phone (H) _____ (W) _____
Address _____
Program of Interest _____ YR. HS GRAD. _____

GENERAL OPPORS.

BEAUTICIAN
Do You Have A Following?
Do You Need Flexible Hours?
DO YOU NEED A CHANGE??
Then We're The Salon For You!!
Call Jill at:
748-4931

MANICURIST
For new tanning salon.
Following pref.
Call Jill at:
748-4931

ADVERTISING SALES
New statewide weekly newspaper has immediate openings for experienced Advertising Sales Representatives. Salary, Commission, Expenses and Benefits. Resume: P.O. 395, Holmdel, NJ 07733

ALL PHASE EMPLOYMENT SERVICE
382 Franklin Ave.
Nutley, N.J.
661-W-O-R-K
997-W-O-R-K
Permanent & Temporary F/T & P/T positions
Vacation Plan

Assistant Needed
For medical office, P/T, in Brookdale, Bloomfield area. You will be working with patients, filing & light typing. Willingness to learn more important than experience. Call 338-3933

Bank Tellers (Part-Time)

The Trust Company of NJ currently has openings for P/T Tellers in our Belleville & Nutley Branches. Trainees considered; clerical or cashier experience is a plus. A professional appearance is required. For information, please call or apply in person:

BELLEVILLE: 751-1001
402 Main Street
Grand Union Center
Belleville, N.J. 07109

NUTLEY: 661-0300
474 Franklin Avenue
Nutley, N.J. 07110

THE TRUST COMPANY OF NEW JERSEY

EOE M/F/D/V

Experienced garage door installer & garage openers needed. Call days 952-0116, eves 377-4278.

FRIENDLY HOME PARTIES

now has openings for demonstrators. No cash investment. Part time hours with full time pay. Two catalogs, over 700 items. 1-800-488-4875

Hairstylist for men's cutting & hair replacement salon. Michaelangelo of No. Arlington is seeking an individual with expert skills who is dependable & reliable & has a business like appearance. Call evenings or weekends only. 779-3098

GENERAL OPPORS.

Mother's Helper needed mornings for newborn twins & 2 yr. old. Baby & H/H chores. Requires exp. w/infants & willingness to help out as needed. Call 667-8774 before 8pm.

NATIONAL PUBLISHING FIRM needs people to label postcards from home. \$800/wk. Set your own hours. Call 1-900-740-7377 (\$1.49 min/18hrs+) or Write: PAASE-D6737, 161 S. Lincolnway, N. Aurora IL 60542

NEWARK LAW FIRM concentrating in banking and real-estate seeks full-time experienced legal secretary with knowledge of mortgage and title closing procedures. (Secured parking provided) Call 201-643-1800 for Interview or Fax Resume 201-624-9505

OFFICE HELP-
Chiropractic office seeks insurance claim person with exp in: Insurance claims submission; computer entry/word perfect a plus; typing; chiropractic health care; front desk office procedure; P/T, Mon Wed & Fri, approx 25 to 30 hrs a week. Permanent position. 759-3600

PART TIME
Housewives wanted to assist school photographer taking school portraits. Must drive. Call weekdays betw 9:30 & 3:00 for appt. 667-2440

POSTAL JOBS
\$11.95/hr to start, plus bnfts. Postal carriers, Sorters, Clerks, Maintenance. For application and exam info: Call 1-219-736-4715 Ext P-2607. 9am to 9pm. 7 days.

REPORTERS
General assignment. Hard news experience. Suburban Essex weeklies. Immediate opening. Resume to: P.O. Box 281 Nutley, NJ 07110

Secretary Belleville law firm seeks individual with excel. knowledge of WordPerfect 5.1, also good typing & organizational skills. Legal exper. a plus. Call or send resume to: Gruhin & Gruhin 630 Washington Avenue Belleville, NJ 07109 759-1932

Telemarketing
Come join our team in the lucrative world of telemarketing. Our Bloomfield office, seeks a few aggressive people, with a positive attitude. A clear speaking voice is a must. Hourly rate plus lucrative incentive program. Flexible hours available. Call Joann: 201-743-7667

Telephone Talkers
No exper. necessary. Excel. pay. Start today! Call 338-3500

GENERAL OPPORS.

TRAINING...TRAINING

Success in real estate requires proper training & management support. We guarantee it. No experience required, just ambition. We sponsor suitable candidates for the pre-licensing course. Learn more about how you can make it to the top. Don't miss out. Call now.

CENTURY 21
North Side
482-7771

Walter/Waitress exp.
only. Day or evening hours. Full or P/T. Call for appt 667-8587 Meyer's Bakery

Your classified ad can be published in 92 New Jersey newspapers with one easy phone call and for one low price. For only \$219 your ad will reach over 1.2 million homes throughout the state. Call 201-667-2100 Ext. #40 for all the details about SCAN - Statewide Classified Ad Network.

PART-TIME HELP

Typist, approx 5 hrs/day, must be willing to learn typesetting. Serafino Printing. 759-0571.

BUSINESS OPPORS.

BEAUTY SALON
Excellent opportunity. Ready to start own business. Over \$25,000 worth of stock, fixtures & equipment. Excel. loc. Low rent. Just turn the key. Must sell. \$15,000. Eves ask for Camille, 759-3344.

284-0904
PATRICIAN
Associates Realtors

LOCAL PAY PHONE ROUTE
\$1200.00 A WEEK POTENTIAL. PRICED TO SELL
1-800-488-7632

Local Vending Route: \$1200 a week potential. Must sell.
1-800-653-VEND.

APPLIANCES

FOR SALE
G.E. dbl. door refrigerator w/ice maker & water dispenser. Almond. Excellent condition.
Call 667-8721

ARTICLES FOR SALE

Bahama cruise, 5 days/4 nights. Underbooked-must sell! Limited tickets. Call 407-767-8100 ext 5233 Mon-Sat 9am-10pm.

BLANDSAWS, JOINERS, PLANERS, Sanders,
Table Saws, Drill Presses, Routers, Dust Collectors, Shapers, Lathes, Shaper Cutter, Router Bits, Sanding Belts, Etc. Save Big Time!
Call 1-717-656-1665.

Used store fixtures for sale. Gondolas, wall units, shelving, & more.
Call Jerry at 751-8181.

WANTED USED AIR CONDITIONERS CASH!!
482-3681

ARTICLES FOR SALE

WOLFF TANNING BEDS
New Commercial-Home Units From \$199.00. Lamps - Lotions - Accessories. Monthly Payments Low As \$18.00. Call Today FREE NEW Color Catalog
1-800-462-9197

ARTICLES WANTED

I'M BUYING TOOLS
*Old *New *Used
*Any Type *Any Quantity
CALL "GENE"
696-4908 4-6 PM weekdays.
After 6:30 PM weekends.
Licensed Gun Collector
Cash for:
*Guns *Swords *Daggers
*Bayonets
*Military Items
Registered Appraiser
CALL 783-6145

LIONEL AND OTHER TRAINS COLLECTOR
PAYS TOP PRICE
CALL 201-334-8709 or 201-635-2058

ESTATE SALES

ESTATE SALE
Sat. Aug. 14, 10am-4pm. Old furniture, bric-a-brac. 69 Edison Ave. Nutley

FURNITURE

*Used Filing Cabinets
*Chairs *Desks
EDELSTEIN OFFICE FURNITURE WISE
946 Market St.-Paterson
Cor.Lakeview Ave. & R180
523-6153

Bamboo glass top table with 6 chairs. Excl cond. Must sell B/O Call 667-2356.

FOR SALE
Ceiling fans, curio cabinet, large conference table, antique sewing machine & cabinet, etc.
Call 667-8721

Moving! Must sell! 3
complete rms of furn +. For more info, call 751-8537 evenings.

Yamaha Organ- dual
keyboard, 1 octave pedal board., Excl working cond. B/O 429-1454

GARAGE SALES

Moving House Sale-40
Newman Ave. Nutley, Sat, 8/14, 10-4. Linens, glasses, dishes etc.

GARAGE SALES

Moving Sale-111 Floyd St.
Belleville, Sat, 8/14, 9-3. Every thing must go! Something for everyone.

NUTLEY BIG SALE-
Refrig, New items, clothes, etc. etc., etc. 151 Harrison St. Sat, 8/14, 9-4

YARD SALE-(Backyard)
Nutley, 454 Chestnut St., Sat, 8/14, Sun, 8/15, 10 am - 5pm. Clothes, HH items, toys, lots of misc. Something for everyone.

FREE PETS

A Loving Kitten free to good a loving & good home. 338-9160

PETS & SUPPLIES

HAPPY JACK FLEAGUARD
All metal patented device controls fleas in the home without chemicals or exterminators. Results overnight. At feed & hardware stores.

REAL ESTATE



EQUAL HOUSING OPPORTUNITY

All real estate advertised herein is subject to the Federal Fair Housing Act of 1968 which makes it illegal to advertise "any preference, limitation, or discrimination based on race, color, religion, sex, national origin, familial status, or handicap, or intention to make any such preferences, limitation, or discrimination"

We will not knowingly accept any advertising for real estate which is in violation of the law. All persons are hereby informed that all dwellings advertised are available on an equal opportunity basis.

To complain about discrimination in housing, call HUD's national toll free number:
1-800-424-8590

CHARGE!



Your Classified ADS

on VISA or MasterCard



667-3000

REAL ESTATE

NO MONEY DOWN
Take over payments.
Pocono Mountains. Bank
repossessed. Lot fully
wooded. Call
717-588-2148

CONDOS FOR SALE

BELLEVILLE
SALE OR RENT
Bridgebrook Condos
725 Joralemon Street
(Off Franklin Ave.)
Brick, 1 & 2 BRS, situated on
8 acres of beautiful
landscaped grounds.
Garage & pool incl in
price. Private entrances.
Low maintenance incl
heat, hot water & gas.
Pets O.K.
VA & FHA approved.
Sales \$85,000 - \$95,000
Rentals \$700 - \$850
Call Marge Marren
(Eves. 759-8107)

284-0904
PATRICIAN
Associates Realtors
Rutherford-2 BR, LR/DR
combo. Mod kit, C/A,
Close to all transp. Move
in cond. \$116,500 neg
507-0478

HOUSES FOR SALE

BANK FORECLOSURES
13,000 HOMES LISTED.
SEPARATE STATE
DIRECTORIES.
NEW JERSEY,
PENNSYLVANIA,
NEW YORK,
CONNECTICUT,
FLORIDA,
MASSACHUSETTS.
SAVE TO 50%
BUYING BANK
DIRECT.
7 DAYS 8AM-9PM.
FORECLOSURE
WORLD
203-838-8200

Belleville 2 flr w/attic &
furn bsmt. L/R, D/R, 3
BRs, 2 bths, mod kit, 2
decks. New plumbing &
wiring. Pool, garage. Ask
\$159,000. Call 751-2092.

FIND YOUR HOME
IN THE
CLASSIFIEDS

HOUSES FOR SALE

BELLEVILLE
Two Family on Brighton
Ave., and Cottage. Mod
kit in both apts. 2 car gar,
rec rm. All for only
\$159,000.

BLOOMFIELD
Two Family on
Bloomfield Ave. Mod kit,
3 mod baths, double lot,
above ground pool. Call
today to inspect. \$169,000.

Excellent Two Family on
North 16th St. 2 lg 5 rm
apts. Move in condition.
Sep. util. Many extras incl.
Asking \$179,900.

ROSA
AGENCY, INC.
571 North 6th St.
Newark, N.J.
484-2230

Belleville-All brick
Mother/daughter, income
potential, screened porch,
fin. bsmt, gar. By Owner
\$199,900. 759-2742

BUILD YOUR OWN
HOME NOW! No down
payment on Miles
materials, below market
construction financing.
Call Miles Homes today,
1-800-343-2884. Ext. 1.

NUTLEY
JUST REDUCED
Adorable brick Cape in
great area. 2 BRS, 2 baths,
fin bsmt with bath used as
3rd BR, lg attic can be
converted, very lg kit plus
att garage. 50 x 100 lot.
Job transfer. Motivated
seller! Reduced to
\$161,900.

284-0904
PATRICIAN
Associates Realtors

NUTLEY
Call Us on our large
selection of homes!
\$140's to \$290's! Great
locations! Open Sundays.
RECORDS REALTY
3 High St., Nutley
667-5500

Nutley Park Ren. M/I
cond, 3 BR col, 1 1/2 bth,
MEIK, FR. OPEN
HOUSE Sat & Sun, 8/14
& 15-2pm. 395 Walnut
St. \$208,000 By appt: days
667-7890, eves 667-9430

SPACE
AVAILABLE
CALL:

HOUSES FOR SALE

OPEN TO OFFERS
BELLEVILLE
6 RM CAPE
154 UNION AVENUE
3 BRS, 1 1/2 baths, mod
kit, fin bsmt. Lot 30 x 170.
Asking \$139,000.

5 RM CAPE
214 LITTLE STREET
2 BRS, lg LR, FDR, new
mod bath, ultra mod kit,
many extras. Asking
\$139,000.

7 RM CAPE
35 GARDEN AVENUE
Extra large. 4 BRS, 2
baths, EIK, lg lot, over-
sized garage. Asking
\$145,000.

PILGRIM REALTY
759-3349

Out of State - For a
FREE directory by mail
of homes and property,
call phonemail at
908-922-7700, press "1",
mailbox #5952. Leave
name and address.

PARSIPPANY AREA
Charming Doll House.
Beautifully kept 2 BR
Ranch. EIK, LR, new
roof, hot water heater &
gas furnace. Lg. fenced in
leveled lot. Close to
everything!
(201) 335-7699 or
263-4569

APARTMENTS UNFURNISHED

BELLEVILLE
4 rooms, heat included.
Available Sept. 1. 1 month
security. For info. call
751-8827 after 7pm.

Belleville 1 & 2 BR, Avail
H/HW incl. Call super
759-8562.

Belleville- 6 rms, 2
bedrooms, 3rd flr. \$700.
incls h/hw. Avail 9/1. 1
mo. sec. 759-3822

BELLEVILLE
6 rms, 2nd flr, laundry, no
pets, \$700 + util.

NUTLEY
4 rms, 2nd flr. \$650 incl
h/hw.

Both apts adults pref - no
pets. Broker:
HANCOX REALTY
667-9115

Belleville- 4 lg rms,
tile bath, crpt. Near sub-
way & N.Y. trans. \$595. +
utils & sec. 759-9743

Belleville/Nutley Line
4 1/2 rms, 2nd fl. \$550.
H/HW supp. 751-1304 If
no answer call 235-1467

Belleville 3 1/2 rm apt.
Beautiful large rms w/
plenty of closet & storage
space. \$695/mo + 1 mo
sec. H/HW, gas incl. Call
751-8337, lv message.

APARTMENTS UNFURNISHED

Belleville- 3 rms. Bus per-
son with ref. \$450. plus
sec. h/hw supplied. Avail
9/1. 759-8476

Belleville-Silver lake area.
Lg. 2 BR apt. H/HW.
refrig, off St. pkg. \$770
per mth. Call 450-4318

BELLEVILLE
3 rms 2nd flr. supply own
utils \$550.

4 rms 2nd flr, h/hw incl.
\$700.
6 rms, 2nd flr & 3rd flr, 1
1/2 bths supply own utils,
\$750.

BLOOMFIELD-5 1/2
mod rms, 1st flr, Supply
own utils (Berkely Ave)
\$700.

4 lg mod rms 2nd flr
newer 3 fam home.
(Broughton) Supply own
utils. \$650.

METRO AGENCY
REALTOR 751-3400

BELLEVILLE
4 rms, 1st flr \$650 + util.
2 BR Condo/2 bths \$850
plus

MONTELL AGENCY
759-6900

Belleville- 4 rms, all
improvements. \$650 per
mo with h/hw. Immed
occup. 759-5708/759-0556

BELLEVILLE- 2 1/2 rm
studio in garden complex,
base loc, ac, laun, assign
pkg, \$500 incl all.

★ ★ ★ MARZULLI ★ ★ ★
REALTOR 743-2306

BELLEVILLE 5 rms, 2
BR, 2nd flr, avail immed.

★ ★ ★ MARZULLI ★ ★ ★
REALTOR 743-2306

Bloomfield- 3 1/2 lg ultra
mod rms with w/w carpt,
H/HW suppl, laundry
facilities on premises,
parking space. Call
743-8886 or 748-0302.

Bloomfield 2 BRS, mod
kit & bth, L/R, D/R, W/D
hook-up, 2 fam, 1st fl.
\$700/mo, incl all utl except
elec. 429-2404, 748-3136.

Bloomfield 2-BRS, L/R,
D/R, eat-in kit, storage
space. Adults preferred.
\$725/mo. Call 467-1038.

Bloomfield- 3 rm apt
\$485. plus utils. Refrig &
stove. Avail 9/1. 743-8748

Bloomfield -1 BR, Avail
9/1. near transp. \$625 incl
H/HW & prkg. 743-3649
Beeper 817-3669

BLOOMFIELD great
garden apt, 1 BR, 24 ft. LR,
AC, laun, pkg. Avail 10/1.
\$650, incl h/hw.

★ ★ ★ MARZULLI ★ ★ ★
REALTOR 743-2306

HOUSES FOR SALE

BLOOMFIELD- 2 BR apt
off 84 pkg. W/w, 3 BR,
AC, 2nd flr, Avail immed.
\$750. incl h/hw.

★ ★ ★ MARZULLI ★ ★ ★
REALTOR 743-2306

BLOOMFIELD 5 rms, 2
BR, 1st flr, \$700. + util.
Avail 9/1

★ ★ ★ MARZULLI ★ ★ ★
REALTOR-743-2306

Bloomfield 3-rms. Heat &
utils incl. Convenient
pkg. Close to mass
transit. Single male pref.
Avail. 9/1 338-8524

CEDAR GROVE-
BR Col., Bath & kit.
Family neighborhood \$187.
239-6143

N. Newark 3 rms in priv
home, good area
(Branchbrook Pk) w/priv
entr, near transp. &
stores. Perfect for student
or single prof. Clean,
quiet, responsible, tenant
with refs. \$495. utils
incl'd. Sec deposit req.
483-5698

NUTLEY
4 lg. rms. (1 BR), 1st fl.,
laund. fac, pkg. for 1 car.
Bus. couple pref.
Avail. Sept. 1. \$600 + utils.
Mac Munn Co. Realtors
667-3440

NUTLEY
4 rms, \$665 h/hw incl.
5 rms, \$700 + util.
4 1/2 rms, \$750 h/hw
incl.

BELLEVILLE
3 rms, \$550 h/hw incl.
3 rms, \$625 h/hw incl.
3 1/2 rms, \$650 h/hw
incl.

4 rms, \$650.

6 rms, \$750 + util.

4 1/2 rm Condo, \$850 +
util.

BLOOMFIELD
2 1/2 rms, \$425 h/hw
incl.

3 rms, \$650 h/hw incl.

5 rms, \$750, h/hw incl.

NO. ARLINGTON
5 rms, \$775 + util.

NO. NEWARK
5 rms, \$500 + util.

3 rm Condo, \$650 h/hw
incl, with garage \$700.

COSTANTINE
REALTY

REALTOR 667-7070

Nutley - 3 rms for rent.
Call after 5pm
667-5927/731-5767

Nutley 1 BR studio. 2nd
flr, \$595. plus 1 mo sec.
utils incl. Call Fran at
998-0357

Nutley 5 rms. Conv. to
trans, shops & schools.
\$675 H/HW supp. Avail.
9/1. 334-4849

HOUSES FOR SALE

NUTLEY CENTER. transp. at door!
2nd flr/4 lg rms, mod-
\$650. plus H & utils. Im-
med occup. REALTOR:
Records Realty 667-5500

Nutley- 3 rms- 3rd flr,
parking for 1 car. Avail 9/
12 \$450. plus utils.
751-7814

Nutley-Arla/Island/Apts.
Passaic Ave. 1 BR inclds.
heat, HW, gas cooking,
w/w crpt. No pets. From
\$695 mth. 201-235-1683
or 201-473-2800

PASSAIC PARK
Beautiful 6 rms with 2 full
baths, garage full attic
storage. W/D hook-up
avail 9/1. \$900 plus utils.

Other rentals, 2 & 3 BRS.
Nutley & Belleville. Call
for availability & rental
amounts. REALTOR:
REALTY WORLD
MONACO 667-8000

CONDOS FOR RENT

BELLEVILLE
SALE OR RENT
Bridgebrook Condos
725 Joralemon Street
(Off Franklin Ave.)
Brick, 1 & 2 BRS, situated
on 8 acres of beautiful
landscaped grounds.
Garage & pool incl in
price. Private entrances.
Low maintenance incl
heat, hot water & gas.
Pets O.K.
VA & FHA approved.
Sales \$85,000 - \$95,000
Rentals \$700 - \$850
Call Marge Marren
(Eves. 759-8107)

284-0904
PATRICIAN
Associates Realtors

BLOOMFIELD
Whitstone Gardens
1 BR, LR, Kit, DR, gar.,
laundry fac. on premises.
H/HW included. \$780. per
month. Avail. Aug. 1.
Call Realtor
Costantine Realty
289 Franklin Avenue
Nutley 667-7070

BLOOMFIELD -
GORGEOUS, 2 bedroom
condo, mod, W/w, ac, avail
9/1. \$950 + util

★ ★ ★ MARZULLI ★ ★ ★
REALTOR 743-2306

VERONA-2 BR, MOD,
W/w, AC, Jacuzzi, 2 pkg.
\$1200 incl H/HW.

★ ★ ★ MARZULLI ★ ★ ★
REALTOR 743-2306

RENTALS

NUTLEY CENTER
Busy loc! prkg near-by!
1000 + sq ft. \$1500 with
lease. detail.
Call REALTOR
667-5500

OFFICE RENTALS

BLOOMFIELD
169 Bloomfield Ave.
(1 bl. from Rickses Ctr)
Approx. 20 x 35
Just remodeled.
Reasonable rent.
Prime location!
Call 680-0081 bot. 9 & 5.

NUTLEY FOR RENT

Professional office space
available. Prime location,
street level, first floor.
3000 sq. ft. Will divide.
Available immediately.
661-2345

Nutley Offices for rent.
2nd story. Prime location.
Reasonable rent. For info
Call Mark 667-1003

RENTALS

OFFICE for rent - 2nd fl,
approx. 1100 sq. ft., 5 rms,
inquire, 7 Ridge Rd.,
No. Arlington 997-1200

RESIDENTIAL RENTALS WTD

Attention Landlords!
Apts wanted. We screen
all prospective tenants.
No fee to landlord.
COSTANTINE
REALTY

289 Franklin Ave., Nutley
REALTOR 667-7070

ROOMMATE(S) WANTED

Nutley/Clifton border.
Private house, close to NY
trans. W/W crpt, walk-in
clst. \$350/mo. 235-0435.

Time Share Units and
campground
memberships. Distress
sales cheap!! Worldwide
selections. Call VACA-
TION NETWORK U.S.
and Canada 1-800-543-
6173. Free rental infor-
mation 305-563-5586

WE DELIVER RESULTS

THE SERVICE DIRECTORY

The Best People to Service You are Only a Phone Call Away.
Why Not Call Them Today?

APPLIANCE REPAIR

MIKE ROMO
Appliance Repair
ALL Major Appliances
Heating & Air
Conditioning
Low Service Charge
661-3783

CLEANING SERVICES

For light housekeeping
services, offices or that
after party clean-up. Call
643-7170 or 578-8825

ELECTRICIAN

DE LIZIO ELECTRICAL
CONTRACTING
*Ind. *Res. *Com.
*Free Estimates
No job too small/too far
CALL 661-2937
License No. 11608

ENTERTAINMENT

HAVE A
MAGICIAN
FOR YOUR NEXT
BANQUET OR PARTY
ADULTS-CHILDREN
HARRY PARKHURST
939-7980

FENCES

DOWLING FENCE INC
*Expert Installations
*Chain Link
*Decorative Wood
Repairs Free Estimates
Reas. Prices
284-1289

FLOORS

SALEM FLOORS
Wood Floor:
*Sanding *Refinishing
*Staining *Pickling
*Waxing *Maintenance
Installation
325-1676

GARAGE DOORS

Mc DANIEL
Enterprises Co.
GARAGE DOORS
Electric Door Openers
Sales Service Installations
Free Est. Fully Insured
ESTABLISHED 1973
667-3943

GUTTERS

*GUTTERS & LEADERS
Cleaned, repaired, or
replaced. Also roof &
siding repairs. Interior &
exterior painting.
CALL AL ROBERTS
751-5462 Free Est.

BILL'S
GUTTER SERVICE
*Gutters & Leaders
*Cleaned & Flushed
*Screening & Repairs
*Minor Tree Trimming
338-0448

HOME IMPROVEMENT

COPPOLA
& SONS, INC.
Est. 1942 50 yrs. Exp.
Aluminum & Vinyl Siding
Roofs/Doors/Additions
Repairs/Windows/Gutters
429-9266 Fully Insured

ANTHONY LOPEZ
CONSTRUCTION
*Siding *Roofing
*Replacement Windows
*Additions *Kitchens
*Baths *Decks *Renov.
*Interior/Exterior
743-4745 Free Estimates

HOME IMPROVEMENTS

20 Years Exp.
*Carpentry *Kitchens
*Plumbing *Bathrooms
*Electrical *Rec. Rooms
*Decks *Porches *Encls.
*Roofing *Additions
*Window/Door Replc.
For Free Estimates
CHARLIE 759-4317

HOME IMPROVEMENT

Modularhaus
Construction Co.
*Roofing*Siding
*Decks*Additions
*Renovations
*Lowest Prices
LTD warranty 955-9494

NICOSIA & SONS CONSTRUCTION CO., INC.

Built on
Recommend



We Save You MORE MONEY ...In MORE Ways!

The Produce Place

SWEET, 2" & UP
Eastern Peaches
.49
lb.

YOUR CHOICE
Tree Ripe Plums, Nectarines or Peaches
.99
lb.

JUICY AND PLUMP
Fresh Blueberries
1.29
1-pt. cont.

CALIFORNIA THOMPSON
Seedless Grapes
4.99
5-lb. box

3 X 4 SIZE RED OR BLACK
California Plums
.99
lb.

LOW IN CALORIES
Yellow or Green Squash
2.99
lbs.

LOW IN CALORIES
Royal Purple Eggplants
.79
lb.

The Dairy Place

RUBY RED GRAPEFRUIT OR REG. OR HOMESTYLE
Florida's Natural Orange Juice
1.49
64-oz. cont.

SEL. VAR. SUNDAE STYLE
ShopRite Yogurt
3.10
8-oz. conts.

REGULAR OR ONION
Axelrod Sour Cream
.74
16-oz. cont.

The Deli Place

WHY PAY MORE?
Wilson Sliced Bacon
1.19
1-lb. pkg.

SELECTED VARIETIES
Ballpark Franks
1.99
1-lb. pkg.

GARLIC OR HALF SOUR
BaTampte Pickles
1.69
1-qt. cont.

The Frozen Foods Place

INTERNATIONAL COMBINATIONS
Pictsweet Vegetables
.99
14 to 16 oz. pkg.

SMALL CHEESE OR VEGETABLE
Celeste Pizza
.89
6.5 to 7.5-oz. pkg.

SEL. VAR. FROZEN YOGURT OR REG. OR LOW FAT
Dolly Madison Ice Cream
1.69
1/2-gal. cont.

4AB0 VALUABLE COUPON
Renew Trash Bags
2.98
FOR 15 CT. TALL KITCHEN OR 10 CT. BOX

The MEATING® Place

TENDER FRESH
Sweet Yellow Corn
6.99
ears

NATURALLY SWEET, 10 SIZE
Fresh Pineapple
1.99
YOU PAY ONLY **1.49**
ShopRite Sale Price LESS PRICE PLUS club Discount

FIRM RIPE
Farm Fresh Plum Tomatoes
.59
lb.

LOW IN CALORIES
Pascal Celery
.99
each

FIRM GREEN
Super Select Cucumbers
3.10
for

VITAMIN 'C'
Green Bell Peppers
.99
lb.

VITAMIN 'A'
Romaine Lettuce
.79
lb.

The Grocery Place

LAUNDRY DETERGENT
Double Power Surf Liquid
2.34
1/2 PRICE TWICE THE LOADS AS OLD SIZE 1 qt. btl.

WHY PAY MORE?
Farm Flavor Apple Juice
.99
1/2-gal. btl.

SELECTED VARIETIES
Red Pack Tomatoes
.59
1-lb. 12-oz. can

SELECTED VARIETIES
Pfeiffer Salad Dressings
.99
1-pt. btl.

SELECTED VARIETIES, PRINCE
Macaroni & Cheese Dinners
.99
8 1/2-oz. boxes

Health & Beauty Care

100 CT. CAPLETS OR
Bayer Aspirin
4.29
YOU PAY ONLY **3.29**
ShopRite Price LESS PRICE PLUS club Discount

Together we can help the victims of the Midwest flood.

ShopRite is working with the Second Harvest Food Bank Network and the American Red Cross Disaster Relief Fund, and we've made it easy for you to contribute to the cause right at the check out. Simply tell the cashier to add \$1.00 or more to your total food order. Your contribution amount will appear on your receipt. It's an easy way to show you care.

ShopRite Coupon
TWO (2) 6-PKS. OR ONE (1) 12-PK., 3380-TOT. SH. CT.
Cottonelle Bath Tissue 12 Rolls
1.99
LESS THAN 12 PER ROLL

The MEATING® Place

5.7 LB. AVG. WITH POP UP TIMER
Oven Stuffer Perdue Roaster
.69
1/2 PRICE

3-LB. PKG., THORN APPLE VALLEY, BUN SIZE
Polish or Smoked Sausage
4.99
YOU PAY ONLY **3.99**
ShopRite Sale Price LESS PRICE PLUS club Discount

CHICKEN TENDERS OR SKINLESS AND
Perdue Boneless Chicken Breast
3.49
lb.

TYSON/HOLLY FARMS 3 SPLIT BREAST, 3 DRUMSTICKS & 3 THIGHS
Pick Of The Chick
1.39
lb.

FRESH ALL AMERICAN, OVEN READY
Whole Leg Of Lamb
1.99
lb.

GRADE 'A'
Perdue Roaster Drumsticks
.89
lb.

PERDUE GRADE 'A' BONELESS
Roaster Breast
3.49
lb.

The Fresh Fish Market

CHERRY, DIET OR CAFF FREE
Classic Coke or Sprite
.89
PLUS DEP. WHERE REQ. 2-ltr. btl.

SELECTED VARIETIES GINGER ALE
Schweppes, Mt. Dew or Slice
.69
PLUS DEP. WHERE REQ. 2-ltr. btl.

2-PLY, 420 TOT. CT. SHEETS
Viva Towels 6 Roll Pack
3.99
pack

#25 ROTELLE PASTA OR #135
San Giorgio Elbows
2.99
1-lb. boxes

21 QUART YIELD
ShopRite Iced Tea Mix
2.99
4-lb. can

General Merchandise

10W30 OR 10W40
Mobil Motor Oil
.89
CASE OF 12 10.68 1 qt. cont.

The MEATING® Place

BONELESS BEEF
Top Round London Broil
1.99
1/2 PRICE

THIN CUT FROM LEG
Veal Cutlet For Scallopini
6.99
lb.

TWIN PACK
Perdue Fresh Cornish Hens
1.39
lb.

PORK LOIN RIB CUT ROAST OR
Center Cut Pork Chops
2.99
lb.

PORK LOIN, 9-11 CHOPS
Pork Chop Combination
1.89
lb.

SWIFT MILD OR GARLIC
Thin Cut Corned Beef
2.99
lb.

SHADY BROOK LEAN BREAKFAST HOT OR SWEET
Fresh Turkey Sausage
2.19
lb.

The Fresh Fish Market

GREAT GRILLED, STORE SLICED
Fresh Salmon Steak
3.99
YOU SAVE AN ADDITIONAL **.50** PER PKG. (1-LB. OR MORE) WITH PRICE PLUS club CARD

U.S. GRADE 'A' FARM RAISED
Fresh Southern Catfish Fillet
3.99
lb.

FROZEN OR THAWED, FARM RAISED
Large White Shrimp
5.99
31-40 PER LB. lb.

The Appy Place

STORE SLICED
Domestic Cooked Ham
2.99
WALR. ADDED lb.

STORE SLICED
Danish Swiss Cheese
3.49
lb.

POTATO & EGG OR
German Potato Salad
.99
lb.

The Bakery Place

SUN. AUG. 8 THRU SAT. AUG. 14, 1993
SELECTED VARIETIES 20 OZ. PKG.
6 Pack Fresh Bagels
.99
YOU PAY ONLY **.79**
ShopRite Sale Price LESS PRICE PLUS club Discount

ShopRite 8 PACK
Hamburger or Hot Dog Rolls
.69
10-oz. pkg.

REGULAR OR SANDWICH
ShopRite White Bread
.89
22-oz. loaf

ShopRite Coupon
5-LB. BOX
Thompson Seedless Grapes
3.99
LESS THAN 30 PER LB.

ShopRite Coupon
12-OZ. BAG, 40% REAL CHOCO-LATE CHIPS, PREMIUM
ShopRite Choc. Chip Cookies
.99
With This Coupon. Limit one per family. Good at any ShopRite. Sun., Aug. 8 thru Sat., Aug. 14, 1993.